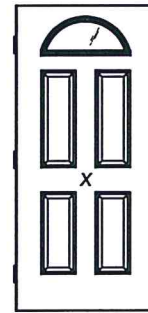


STEVE'S AND SONS

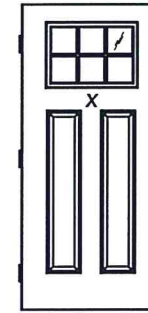
203 Humble Ave.
San Antonio, TX 78225



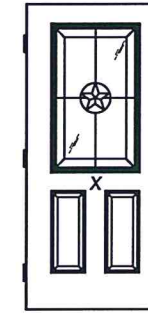
FAN LITE



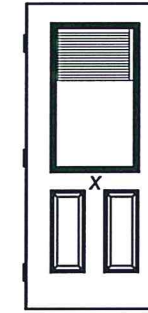
CAMBER TOP



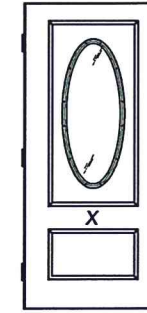
1/4 LITE



1/2 LITE



1/2 LITE
w/ MICROBLINDS

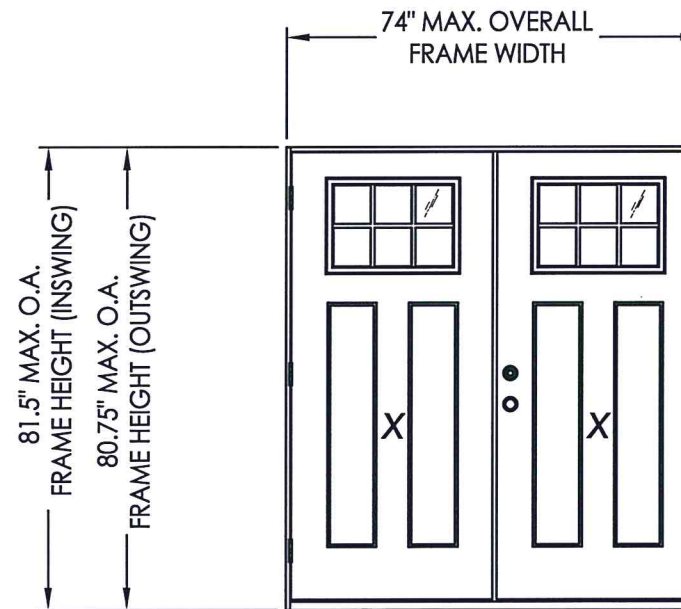


3/4 OVAL

ELEMENT COLLECTION

GLAZED STEEL DOOR DOUBLE

INSWING/OUTSWING "NON-IMPACT"



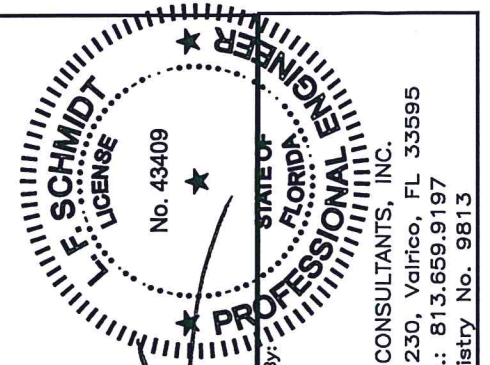
GENERAL NOTES

1. This product has been evaluated and is in compliance with the 7th Edition (2020) Florida Building Code (FBC) structural requirements excluding the "High Velocity Hurricane Zone" (HVHZ).
2. Product anchors shall be as listed and spaced as shown on details. Anchor embedment to base material shall be beyond wall dressing or stucco.
3. When used in areas requiring wind borne debris protection this product is required to be protected with an impact resistant covering that complies with FBC Sections 1609.1.2 & R301.2.1.2 of the FBC.
4. For 2x stud framing construction, anchoring of these units shall be the same as that shown for 2x buck masonry construction.
5. Site conditions that deviate from the details of this drawing require further engineering analysis by a licensed engineer or registered architect.

TABLE OF CONTENTS

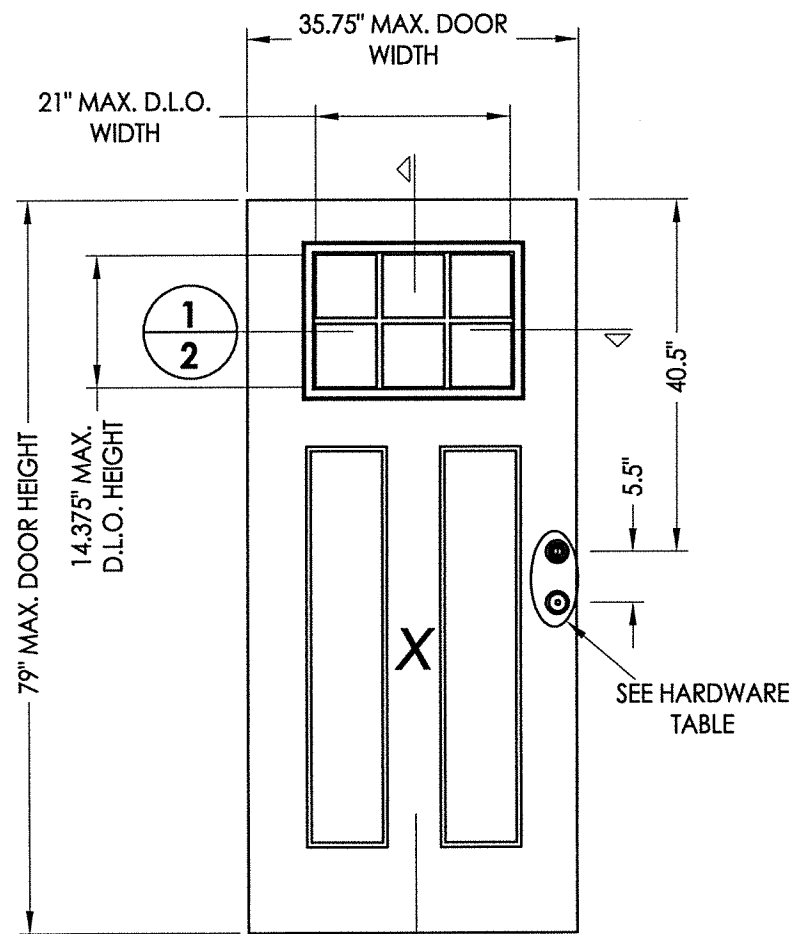
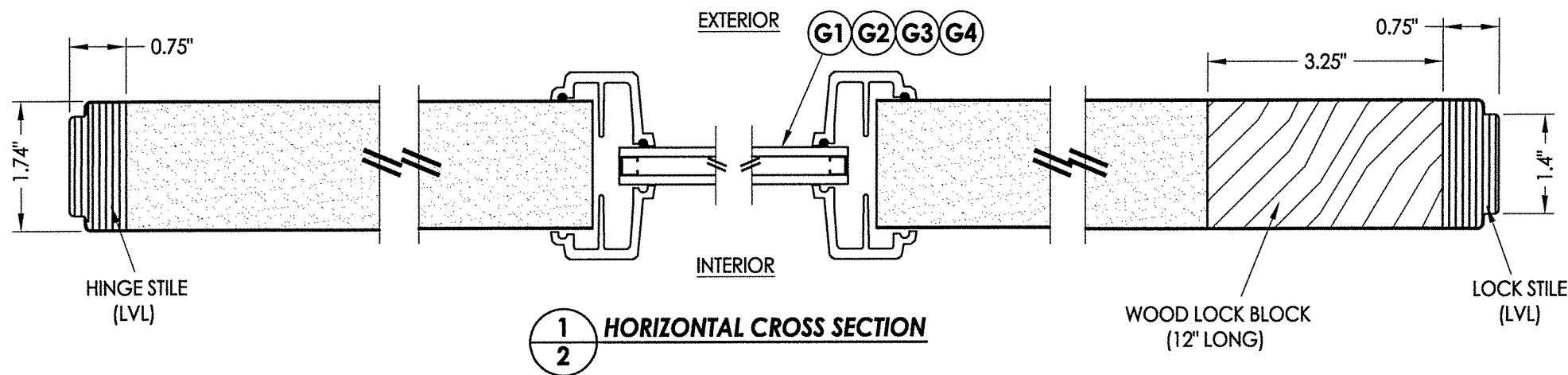
SHEET #	DESCRIPTION	SHEET #	
1	Typical Elevations, Design Pressures & General Notes	7	Horizontal & Vertical Cross Sections (Direct to Masonry)
2	Door Panel Details	8	Vertical Cross Sections
3	Panel Options	9	Buck & Frame Anchoring & Hardware Details
4	Elevations	10	Door Life Frame & Glazing Details
5	Horizontal & Vertical Cross Sections (2X Buck)	11	Bill of Materials & Components
6	Horizontal & Vertical Cross Sections (1X Buck)		

CONFIGURATION	MAX. FRAME DIMENSION	DESIGN PRESSURE (PSF) INSWING		DESIGN PRESSURE (PSF) OUTSWING	
		POSITIVE	NEGATIVE	POSITIVE	NEGATIVE
XX	74.0" x 81.5"	+40.0	-40.0	+40.0	-40.0



May 25, 2022
 Documents Prepared By:
 Lyndon F. Schmidt
 P.E. No. 43409
 BUILDING CONSULTANTS, INC.
 P.O. Box 230, Valrico, FL 33595
 Phone No.: 813.659.9197
 FBPE Registry No. 9813

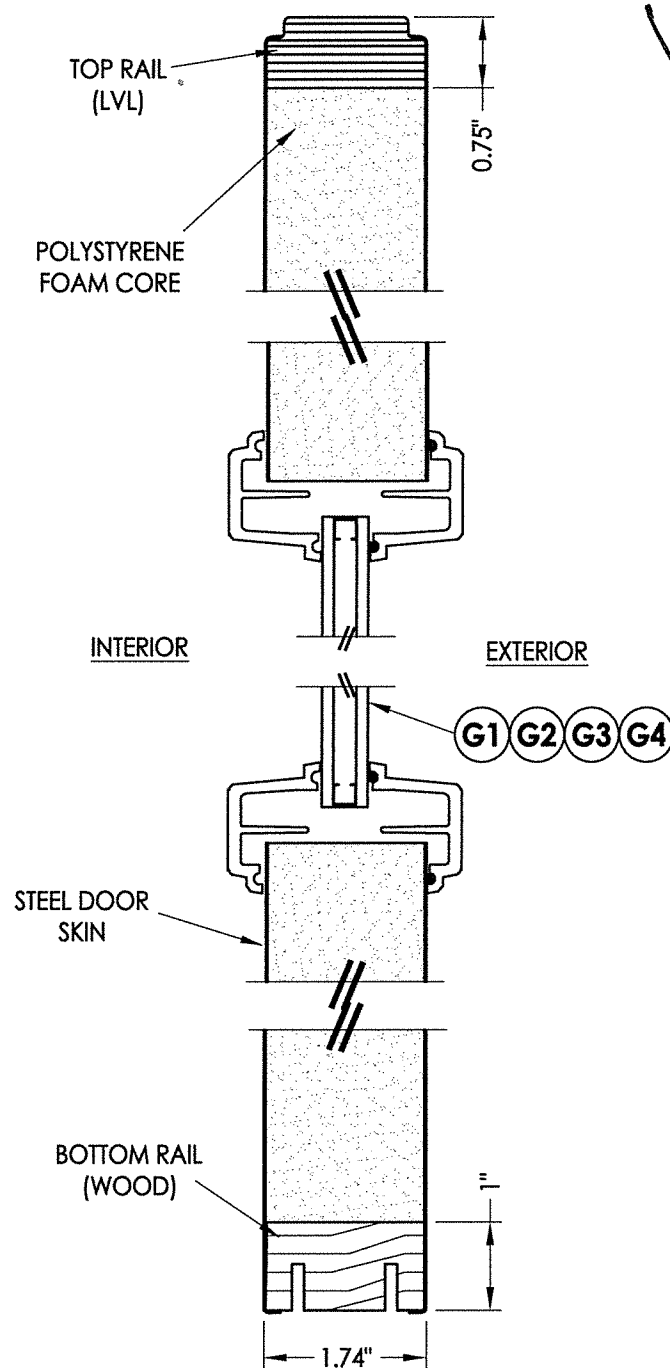
PRODUCT:	STEVE'S & SONS FIBERGLASS DOOR
PART OR ASSEMBLY:	TYPICAL ELEVATION, DESIGN PRESSURES & GENERAL NOTES
DATE:	4/26/22
SCALE:	N.T.S.
DWG. BY:	RW
CHK. BY:	LFS
DRAWING NO.:	FL-41471.2
SHEET	1 OF 11



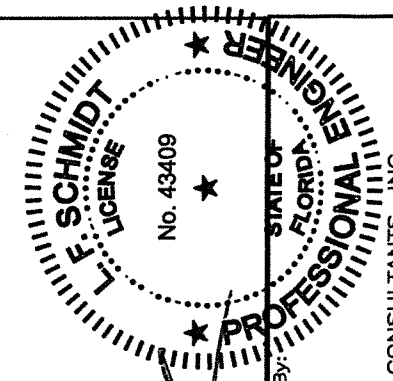
SEE SHEET 10 FOR ADDITIONAL DOOR LITE FRAMES & GLAZING OPTIONS:

G1 G2 G3 G4

HARDWARE TABLE		
MANUFACTURER	MODEL	
KWIKSET	LATCH:	SIGNATURE SERIES
	DEADBOLT:	SIGNATURE SERIES (980)
SCHLAGE	LATCH:	F51
	DEADBOLT:	B60N
ROCKWELL	LATCH:	PREMIUM HANDLESET
	DEADBOLT:	PREMIUM DEADBOLT



STEEL DOOR SKIN: MIN. 0.020" THK.
CORE MATERIAL: POLYSTYRENE FOAM



Lyndon F. Schmidt
May 25, 2022

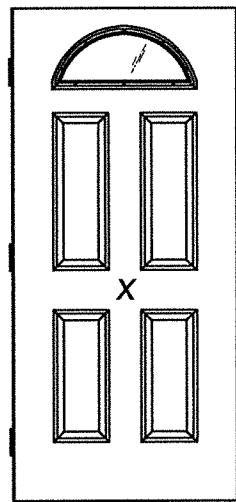
Documents Prepared By:
Lyndon F. Schmidt
P.E. No. 43409

RW BUILDING CONSULTANTS, INC.
P.O. Box 230, Vairico, FL 33595
Phone No.: 813.659.9197
FBPE Registry No. 9813

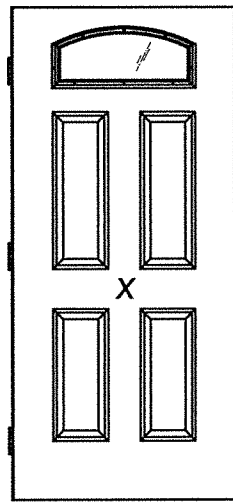
PRODUCT: STEVES & SONS STEEL DOOR
PART OR ASSEMBLY: DOOR PANEL DETAILS

NO.	DATE	BY	REVISIONS

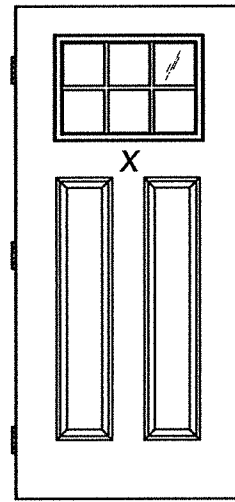
DATE: 4/26/22
SCALE: N.T.S.
DWG. BY: RW
CHK. BY: LFS
DRAWING NO.: FL-41471.2
SHEET 2 OF 11



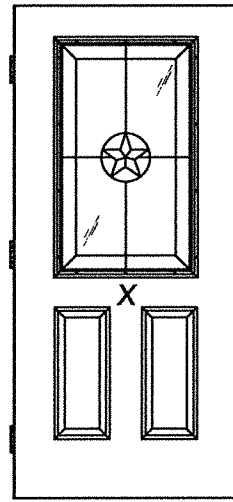
FAN LITE



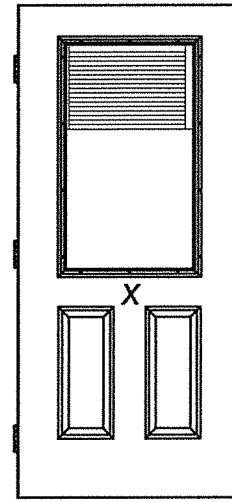
CAMBER TOP



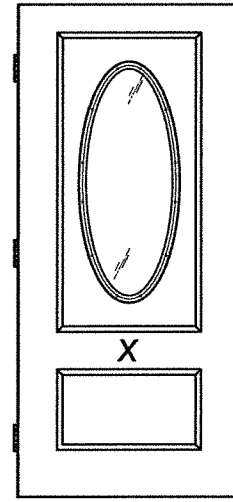
1/4 LITE



1/2 LITE

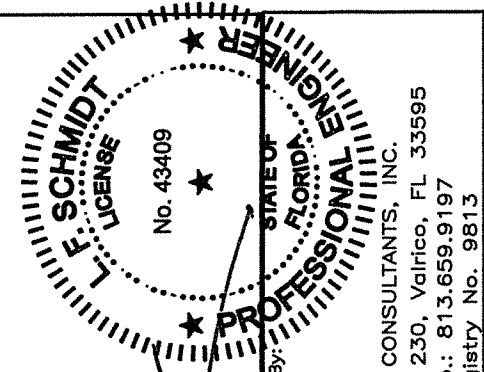


1/2 LITE
w/ MICROBLINDS



3/4 OVAL

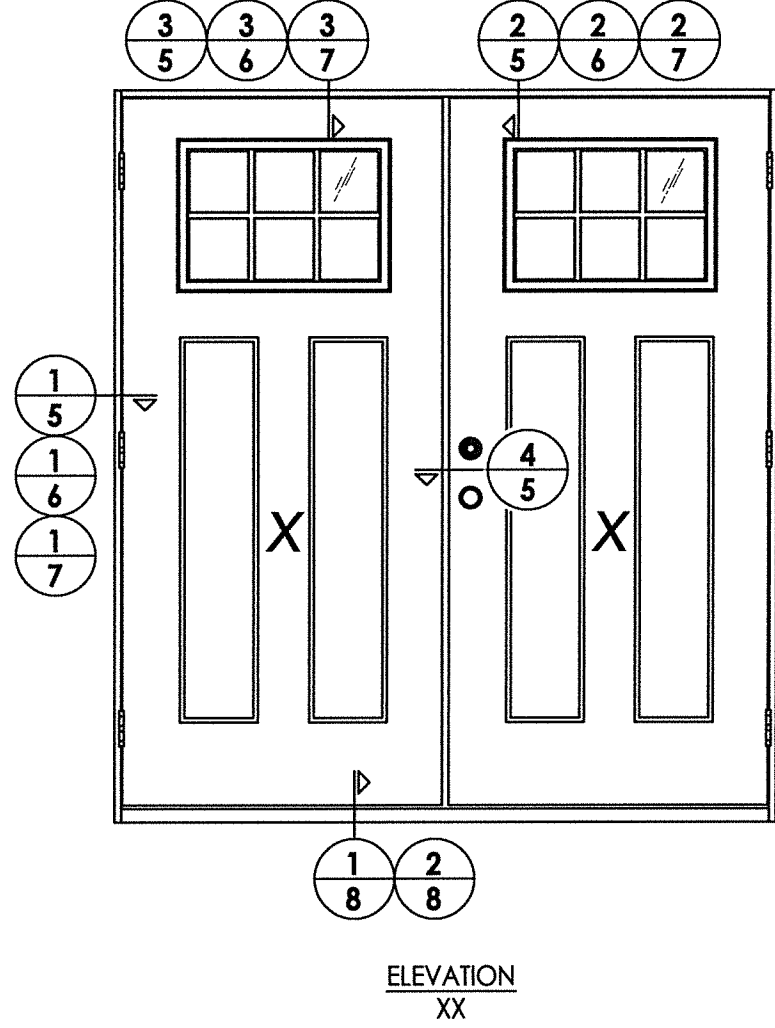
ELEMENT COLLECTION



 May 25, 2022
 Documents Prepared By: *LFS*
 Lyndon F. Schmidt
 P.E. No. 43409

RW
 BUILDING CONSULTANTS, INC.
 P.O. Box 230, Valrico, FL 33595
 Phone No.: 813.659.9197
 FBPE Registry No. 9813

	PRODUCT:	STEVES & SONS FIBERGLASS DOOR	
	PART OR ASSEMBLY:	PANEL OPTIONS	
	NO.	DATE	BY
REVISIONS			
DATE: 4/26/22			
SCALE: N.T.S.			
DWG. BY: RW			
CHK. BY: LFS			
DRAWING NO.: FL-41471.2			
SHEET 3 OF 11			



DATE: 4/26/22
SCALE: N.T.S.
DWG. BY: RW
CHK. BY: LFS
DRAWING NO.: FL-41471.2
SHEET 4 OF 11

NO.	DATE	REVISIONS	BY

PRODUCT:
STEVE'S & SONS
FIBERGLASS DOOR
PART OR ASSEMBLY:
ELEVATIONS

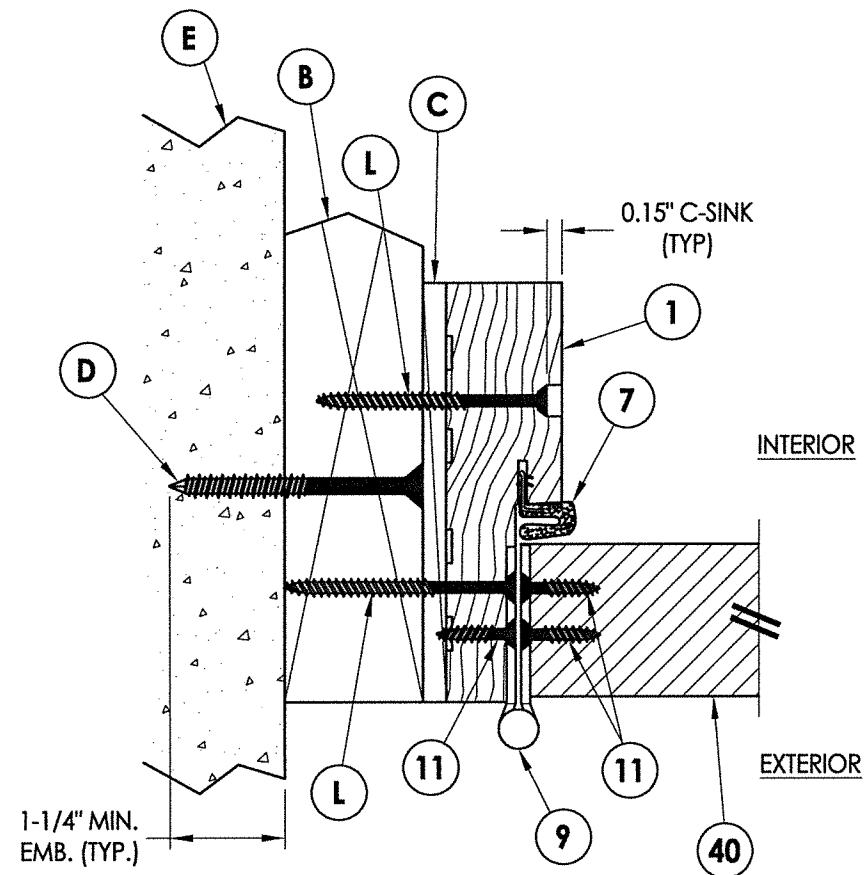
May 25, 2022

Documents Prepared By:
Lyndon F. Schmidt
P.E. No. 43409

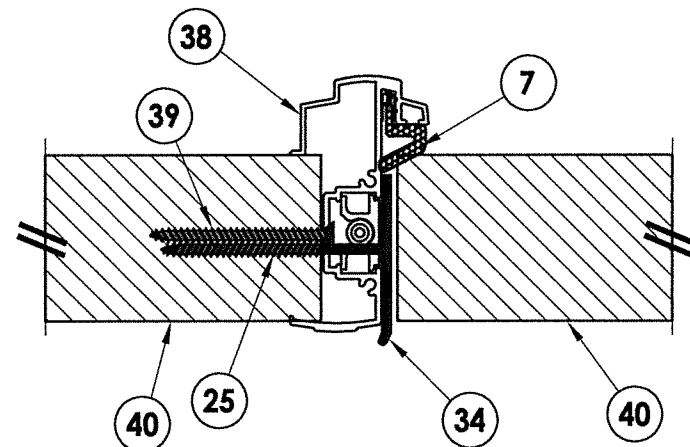
RW

F. SCHMIDT
LICENSE
No. 43409
STATE OF FLORIDA
PROFESSIONAL ENGINEER

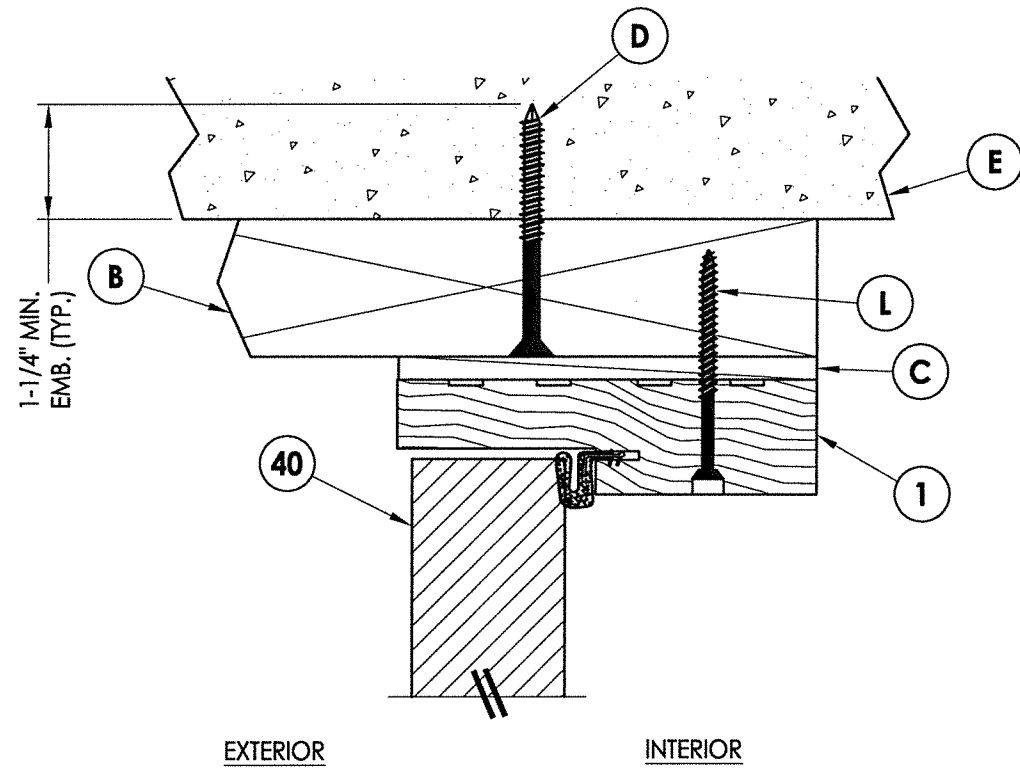
R.W. BUILDING CONSULTANTS, INC.
P.O. Box 230, Vairico, FL 33595
Phone No.: 813.659.9197
FBPE Registry No. 9813



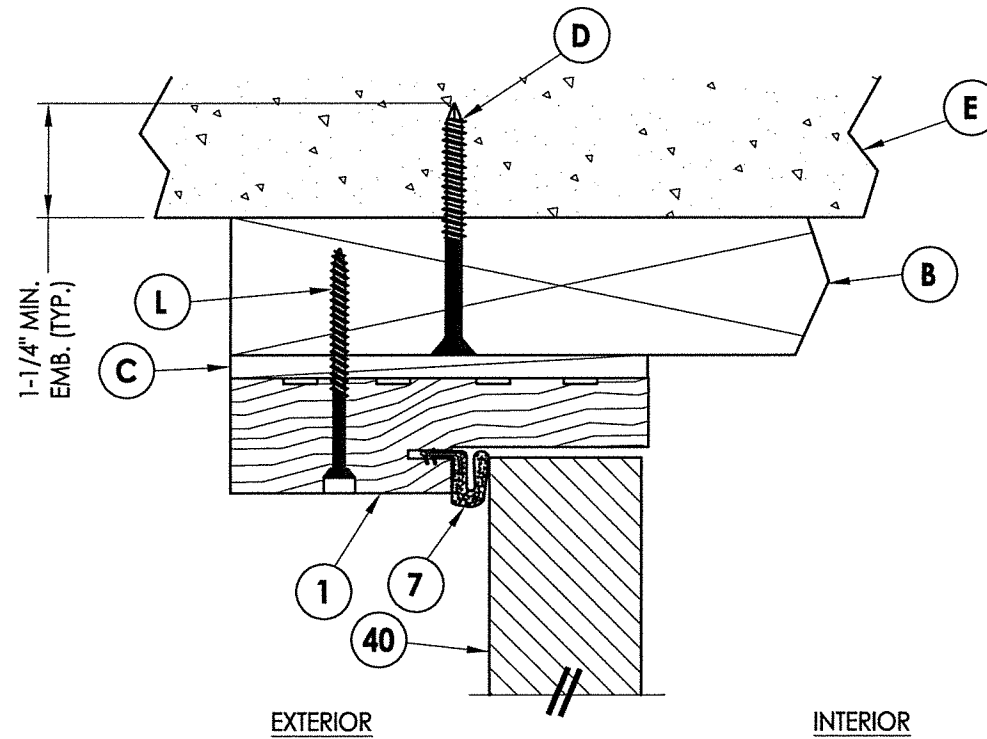
1 HORIZONTAL CROSS SECTION
5 Shown w/ 2X Buck
 Outswing shown (Inswing similar)



4 HORIZONTAL CROSS SECTION
5 Outswing shown (Inswing similar)

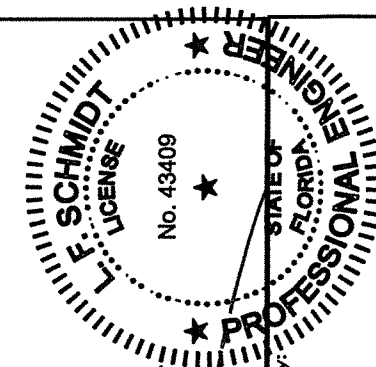


2 VERTICAL CROSS SECTION
5 Shown w/ 2X Buck
 Outswing shown



3 VERTICAL CROSS SECTION
5 Shown w/ 2X Buck
 Inswing shown

Note:
 1. Screws located 8" from each end of astragal plus four (3) more located @ 23", 37" & 48" down from the top of the astragal (5 screws total - countersink 3/16").



LFS

May 25, 2022

Documents Prepared By:
 Lyndon F. Schmidt
 P.E. No. 43409

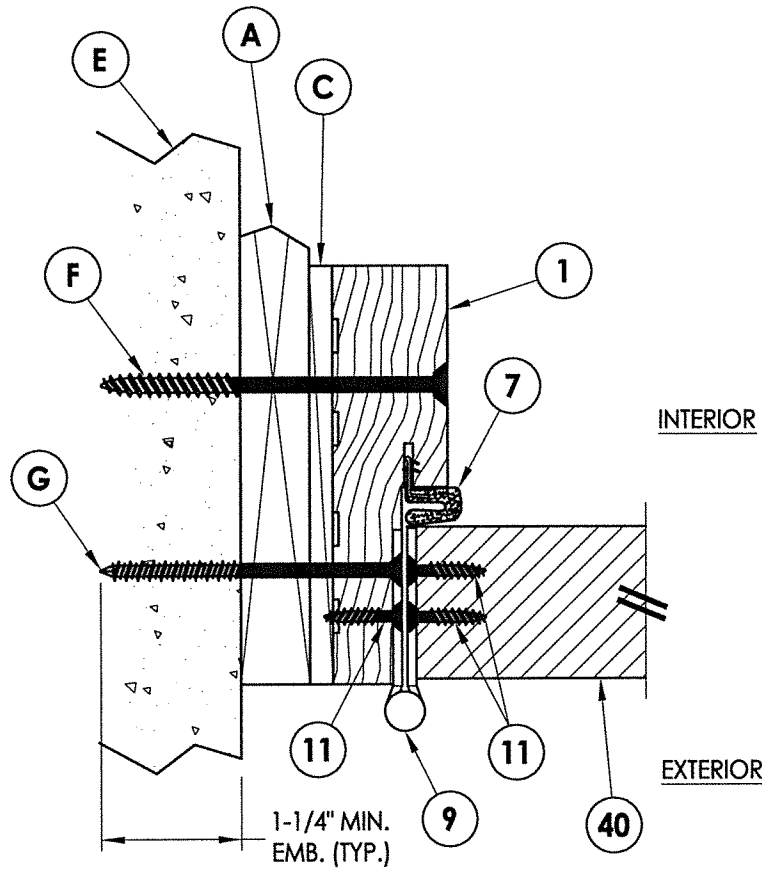
RW

BUILDING CONSULTANTS, INC.
 P.O. Box 230, Valrico, FL 33595
 Phone No.: 813.659.9197
 FBPE Registry No. 9813

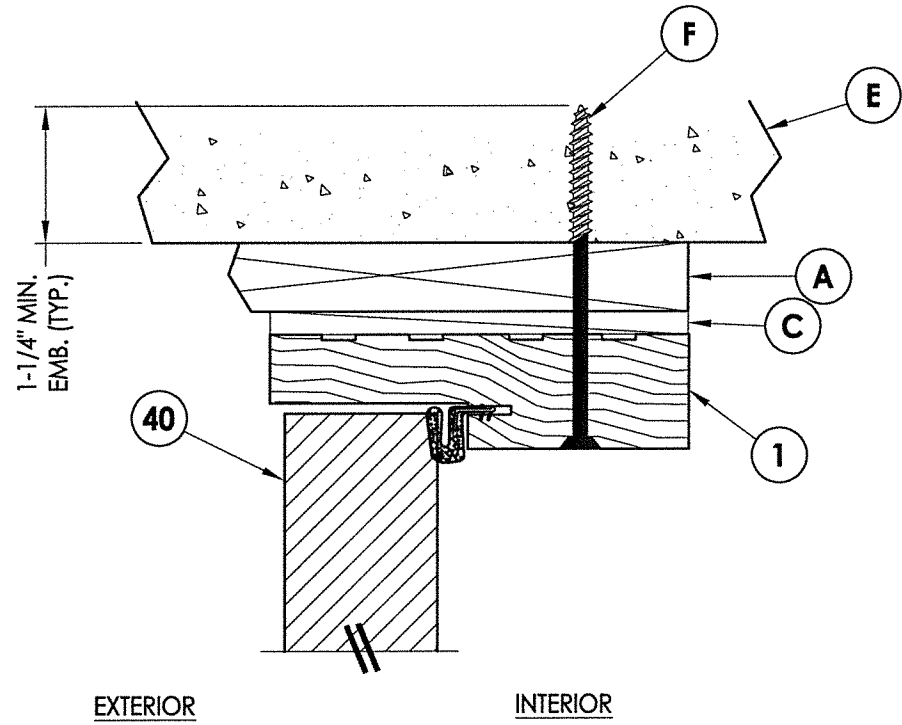
PRODUCT: STEVES & SONS FIBERGLASS DOOR
 PART OR ASSEMBLY: HORIZONTAL & VERTICAL CROSS SECTIONS (2X BUCK)

NO.	DATE	BY	REVISIONS

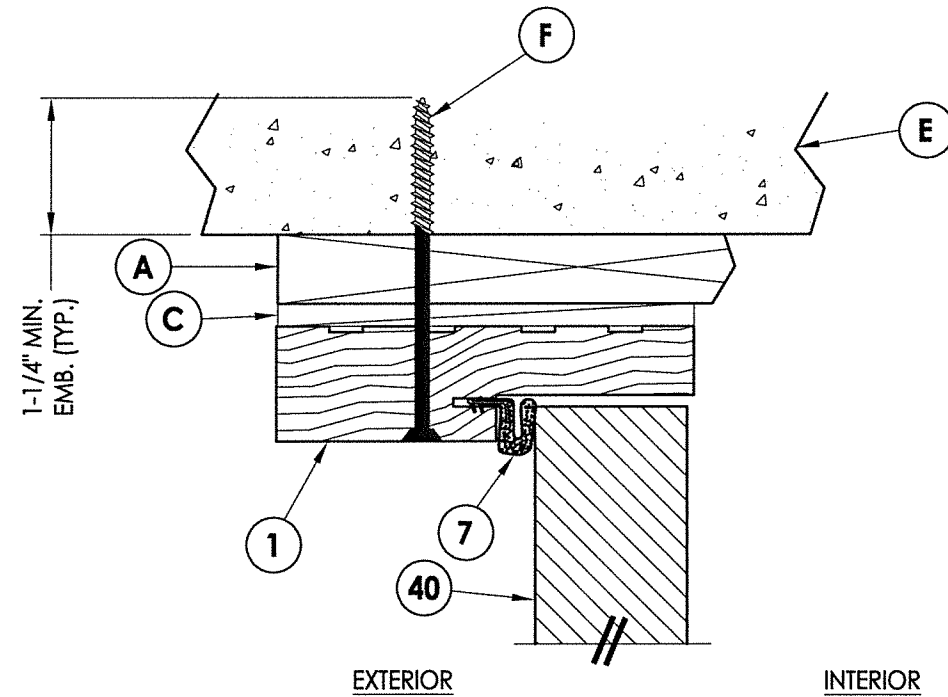
DATE: 4/26/22
 SCALE: N.T.S.
 DWG. BY: RW
 CHK. BY: LFS
 DRAWING NO.: FL-41471.2
 SHEET 5 OF 11



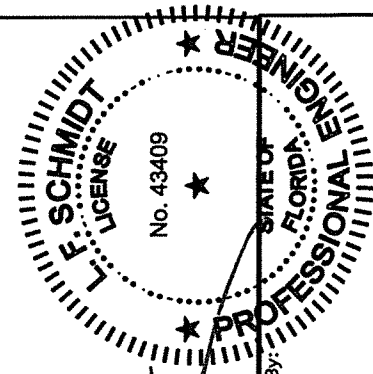
1 HORIZONTAL CROSS SECTION
 6 Shown w/ 1X Buck
 Outswing shown (Inswing similar)




2 VERTICAL CROSS SECTION
 6 Shown w/ 1X Buck
 Outswing shown



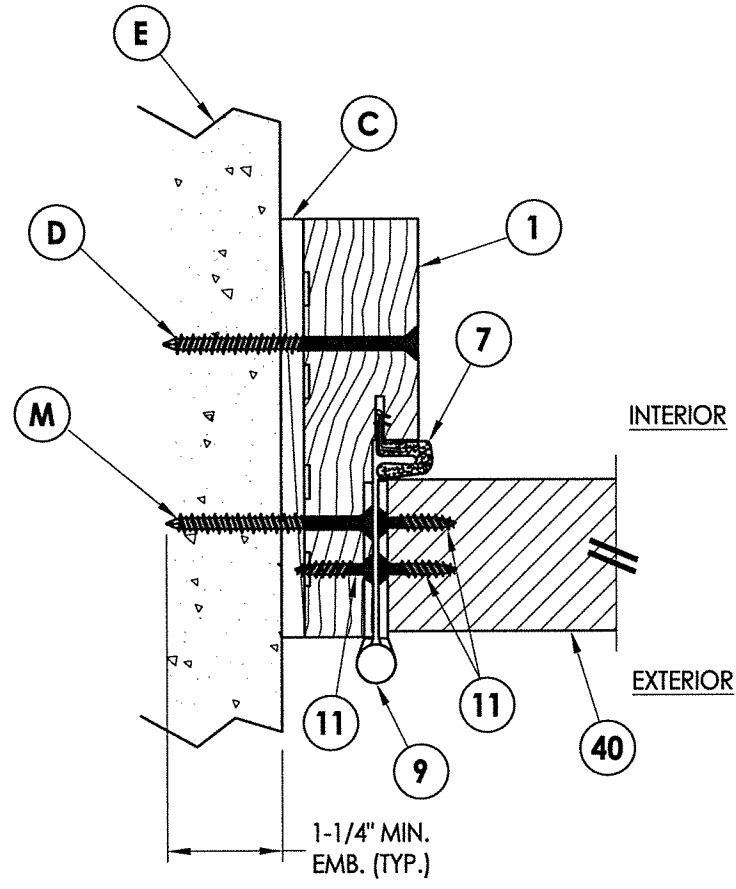
3 VERTICAL CROSS SECTION
 6 Shown w/ 1X Buck
 Inswing shown


 L.F. SCHMIDT
 LICENSE No. 43409
 STATE OF FLORIDA
 PROFESSIONAL ENGINEER

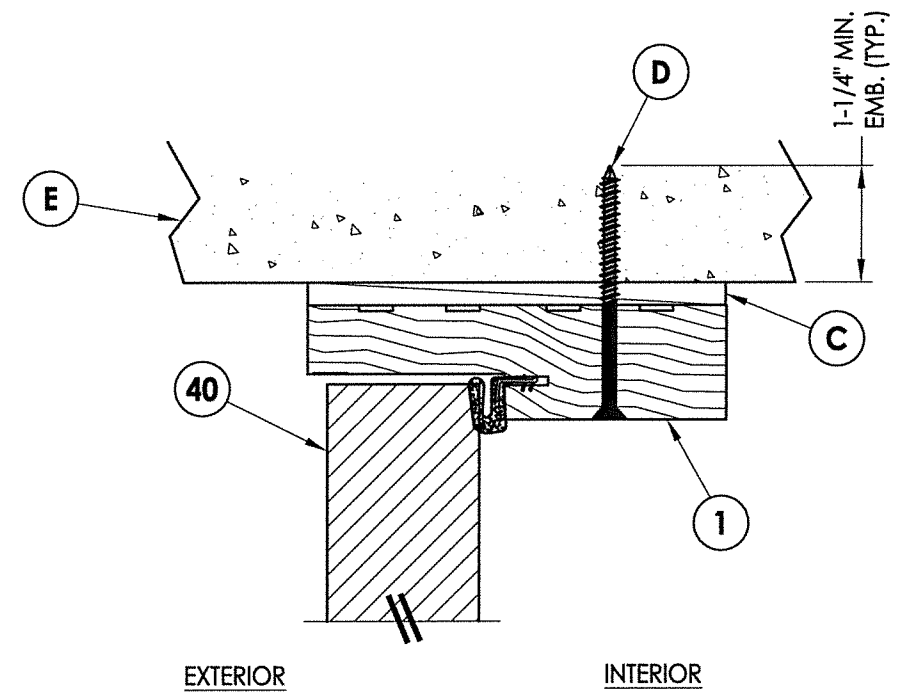
May 25, 2022
 Documents Prepared By:
 Lyndon F. Schmidt
 P.E. No. 43409


 R.W. BUILDING CONSULTANTS, INC.
 P.O. Box 230, Valrico, FL 33595
 Phone No.: 813.659.9197
 FBPE Registry No. 9813

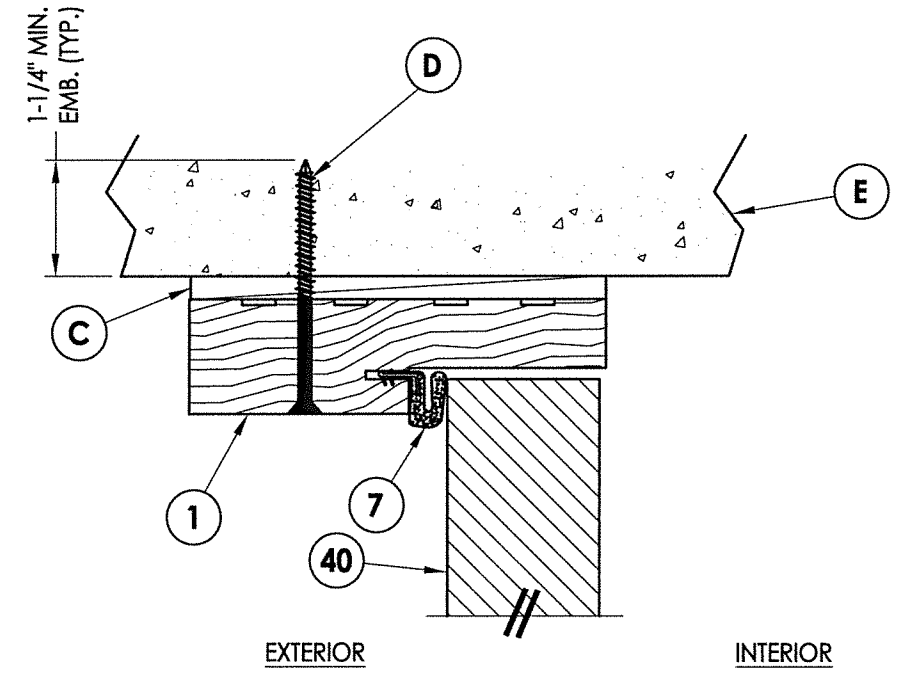
PRODUCT:	STEVES & SONS FIBERGLASS DOOR	
PART OR ASSEMBLY:	HORIZONTAL & VERTICAL CROSS SECTIONS (1X BUCK)	
NO.	DATE	BY
REVISIONS		
DATE: 4/26/22		
SCALE: N.T.S.		
DWG. BY: RW		
CHK. BY: LFS		
DRAWING NO.: FL-41471.2		
SHEET 6 OF 11		



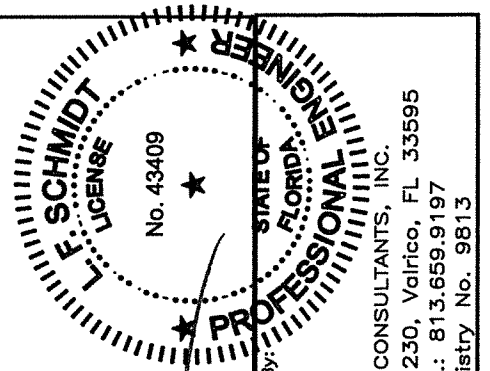
1 HORIZONTAL CROSS SECTION
 7 Shown Direct to Masonry
 Outswing shown (Inswing similar)



2 VERTICAL CROSS SECTION
 7 Shown Direct to Masonry
 Outswing shown



3 VERTICAL CROSS SECTION
 7 Shown Direct to Masonry
 Inswing shown



LFS

May 25, 2022

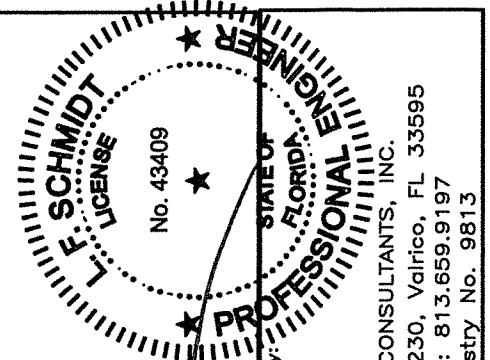
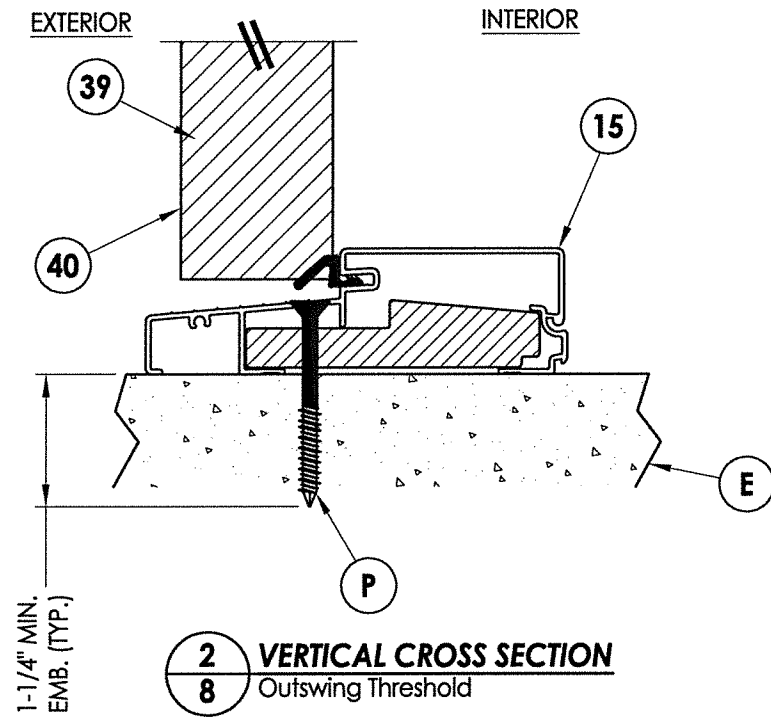
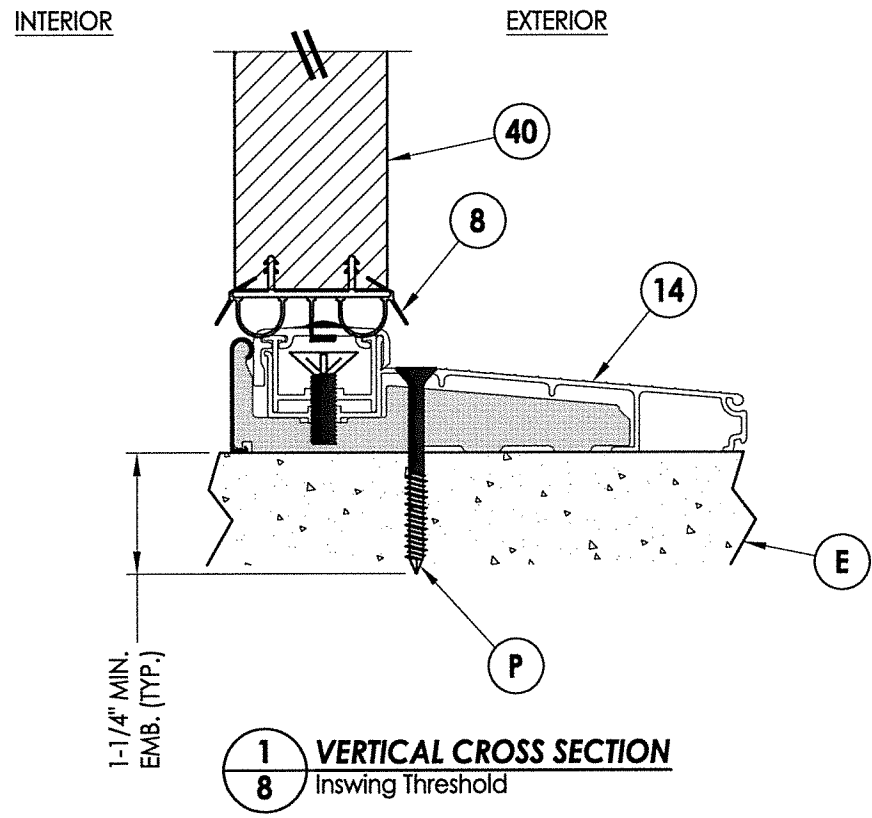
Documents Prepared By:
 Lyndon F. Schmidt
 P.E. No. 43409

RW BUILDING CONSULTANTS, INC.
 P.O. Box 230, Valrico, FL 33595
 Phone No.: 813.659.9197
 FBPE Registry No. 9813

PRODUCT:
 STEVES & SONS
 FIBERGLASS DOOR
 PART OR ASSEMBLY:
 HORIZONTAL & VERTICAL CROSS
 SECTIONS (DIRECT TO MASONRY)

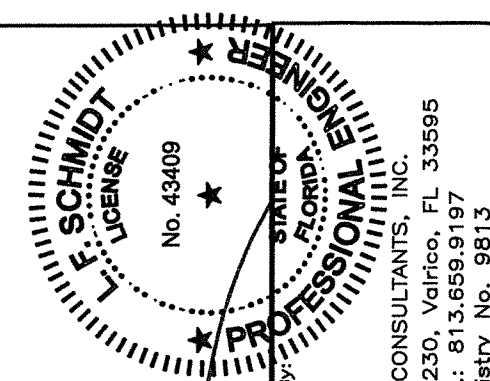
NO.	DATE	BY	REVISIONS

DATE: 4/26/22
 SCALE: N.T.S.
 DWG. BY: RW
 CHK. BY: LFS
 DRAWING NO.:
 FL-41471.2
 SHEET 7 OF 11

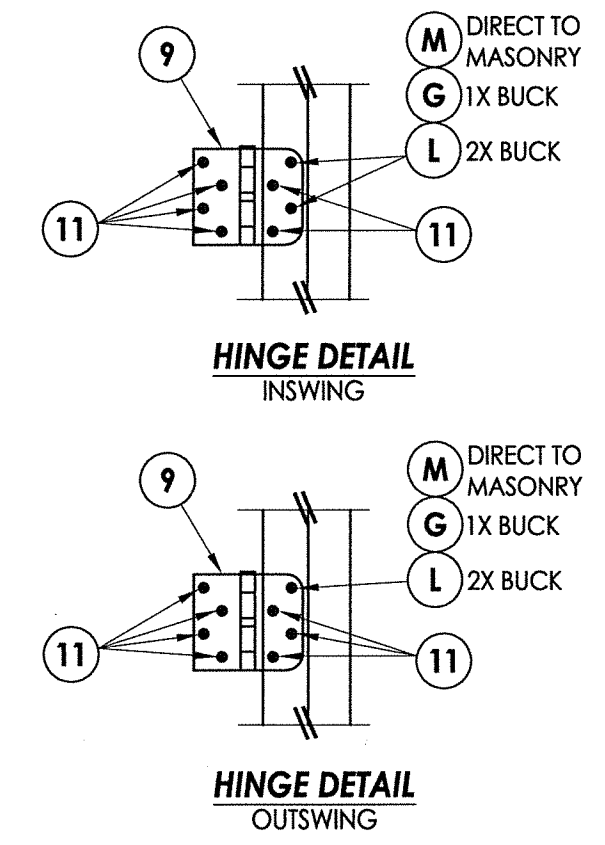
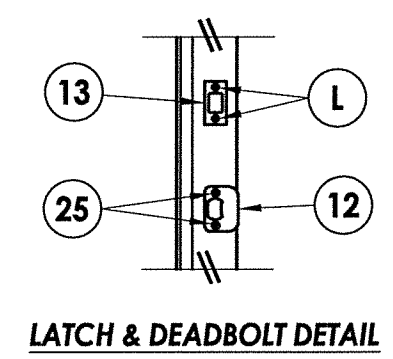
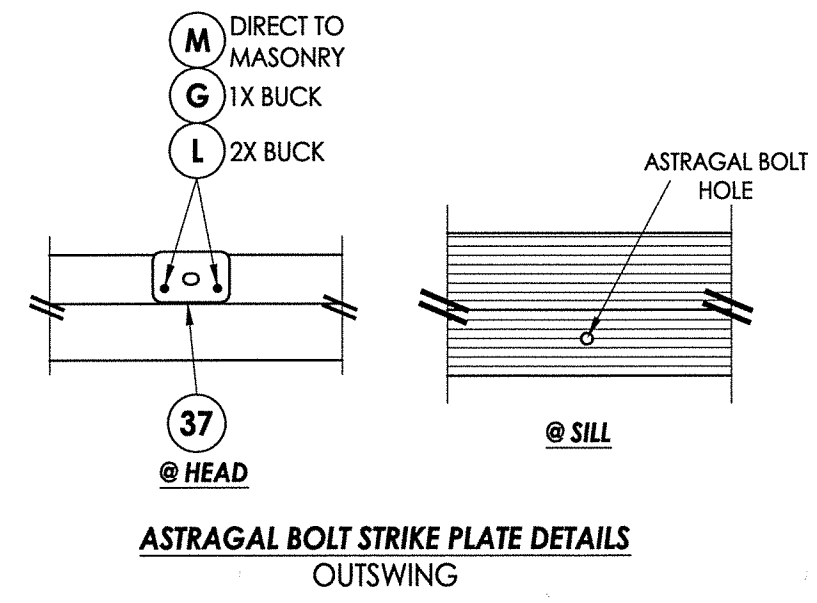
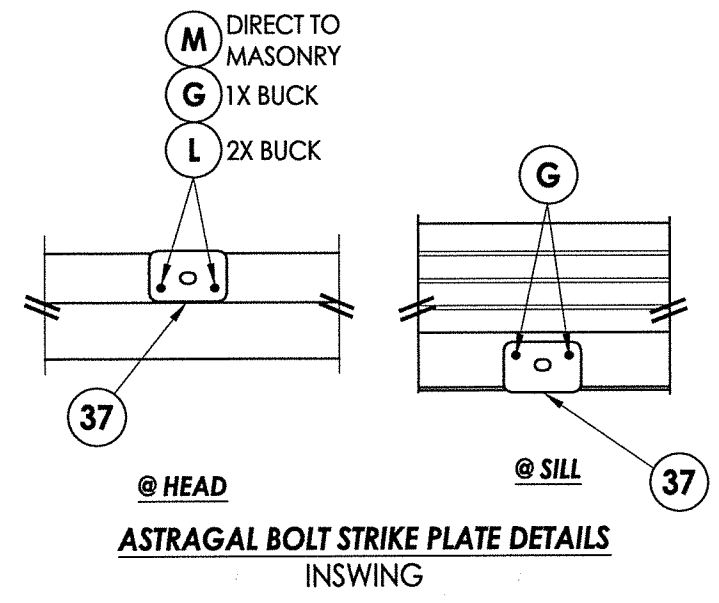
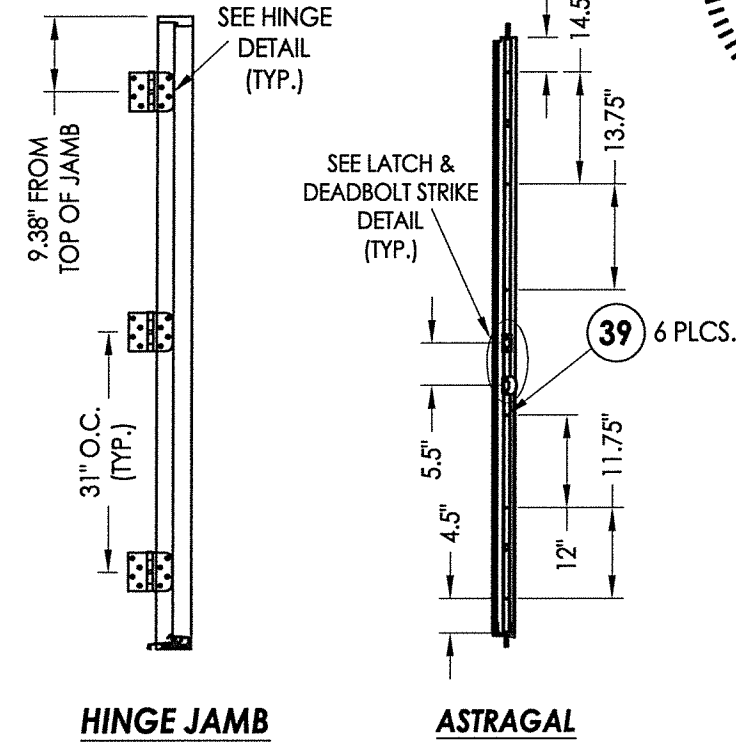
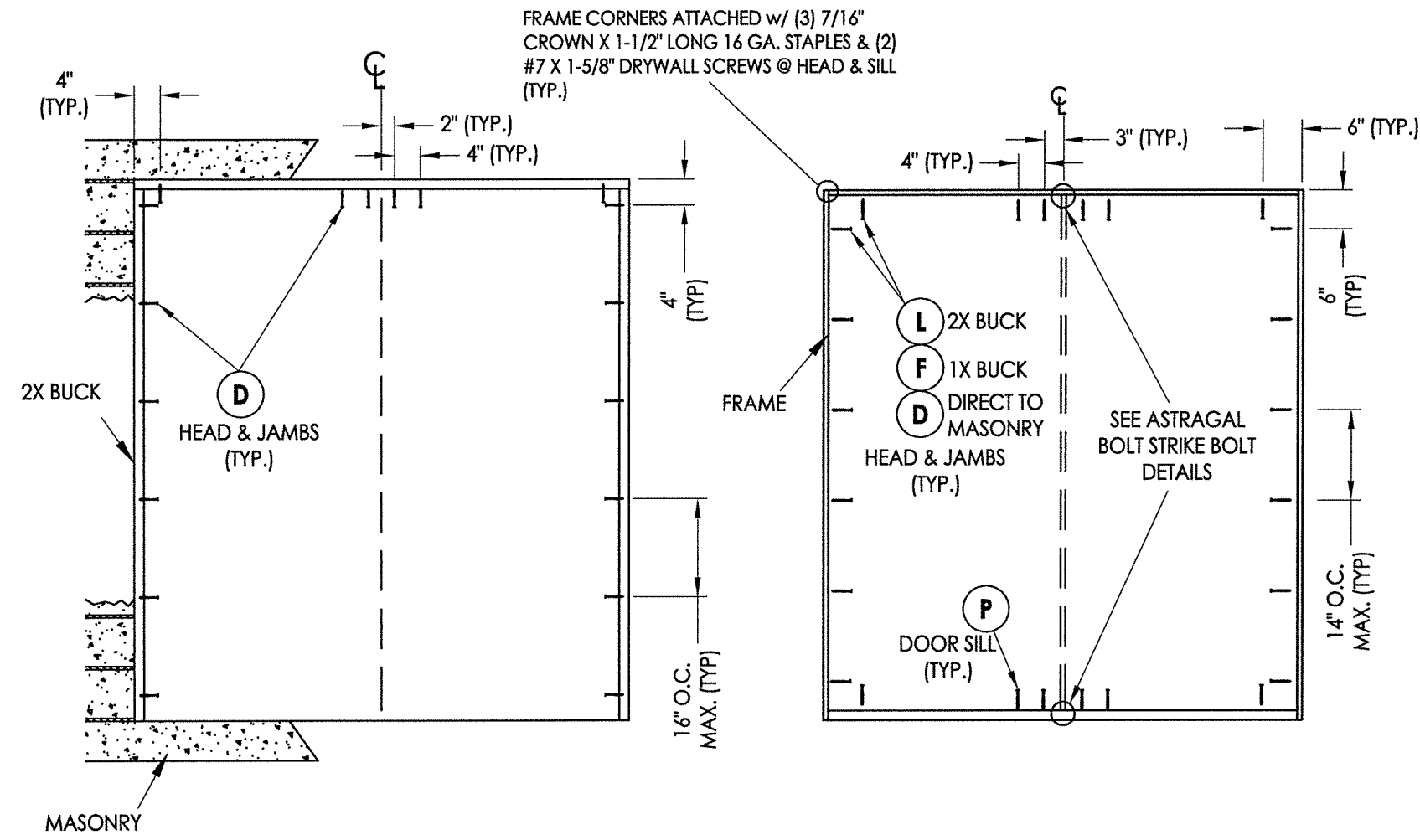


May 25, 2022
 Documents Prepared By:
 Lyndon F. Schmidt
 P.E. No. 43409
 R.W. BUILDING CONSULTANTS, INC.
 P.O. Box 230, Valrico, FL 33595
 Phone No.: 813.659.9197
 FBPE Registry No. 9813

PRODUCT:		STEVES & SONS FIBERGLASS DOOR	
PART OR ASSEMBLY:		VERTICAL CROSS SECTIONS	
NO.	DATE	BY	REVISIONS
DATE: 4/26/22			
SCALE: N.T.S.			
DWG. BY: RW			
CHK. BY: LFS			
DRAWING NO.: FL-41471.2			
SHEET 8 OF 11			



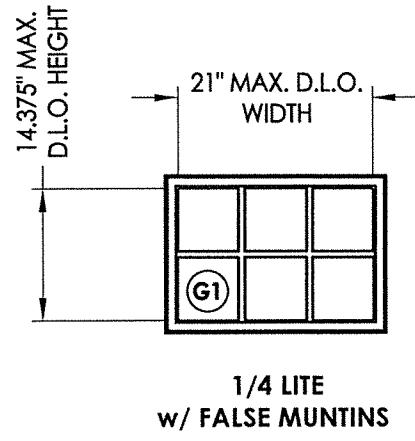
May 25, 2022
 Documents Prepared By:
 Lyndon F. Schmidt
 P.E. No. 43409
 RW BUILDING CONSULTANTS, INC.
 P.O. Box 230, Valrico, FL 33595
 Phone No.: 813.659.9197
 FBPE Registry No. 9813



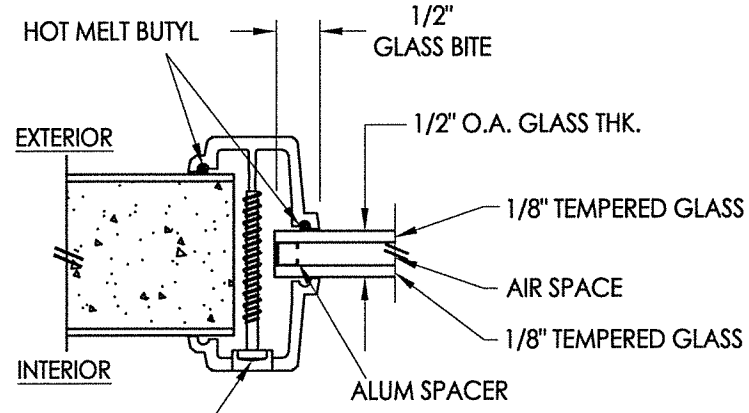
HARDWARE DETAILS

PRODUCT:	STEVES & SONS FIBERGLASS DOOR	
PART OR ASSEMBLY:	BUCK & FRAME ANCHORING & HARDWARE DETAILS	
NO.	DATE	BY
		REVISIONS
DATE: 4/26/22		
SCALE: N.T.S.		
DWG. BY: RW		
CHK. BY: LFS		
DRAWING NO.: FL-41471.2		
SHEET 9 of 11		

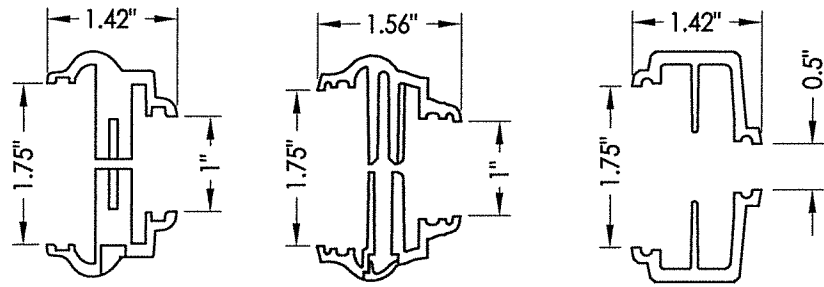
Z:\Clients\Stevens and Sons - Permanent\A - Florida Product Approvals\FL-41471 ELEMENT SERIES\C - Drawings\FL-41471 (2020)\FL-41471.2.dwg



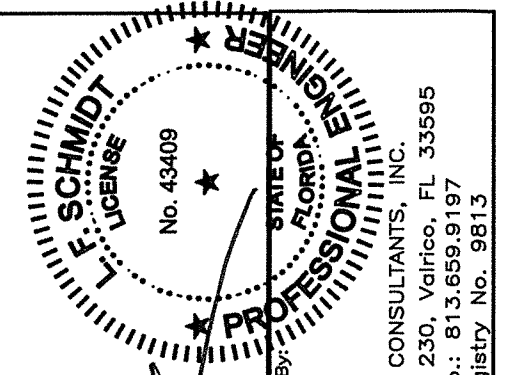
#8 X 1-1/2" PH SMS (HI-LO THREAD)
(10 TOTAL)



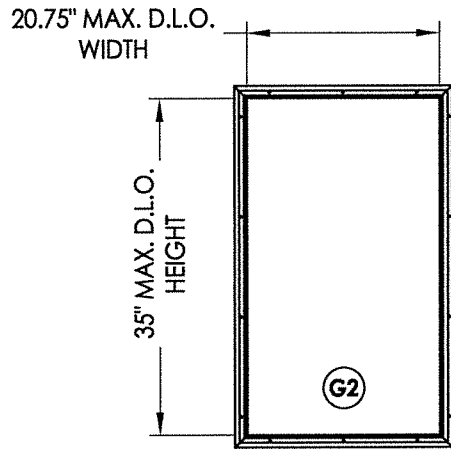
G1 GLAZING DETAIL
ODL CRAFTSMAN LITE FRAME
HP POLYPROPYLENE



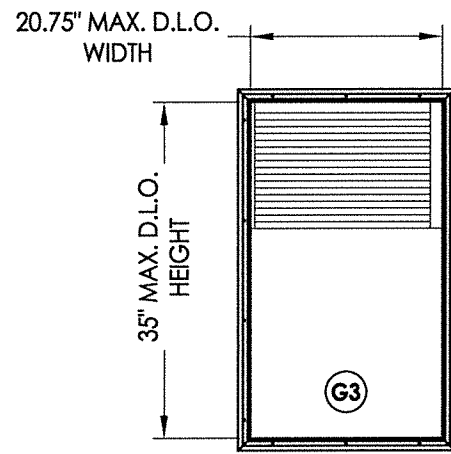
TKI PRODUCTS LITE FRAME ODL LITE FRAME (EVOLVE) ODL LITE FRAME (CRAFTSMAN)



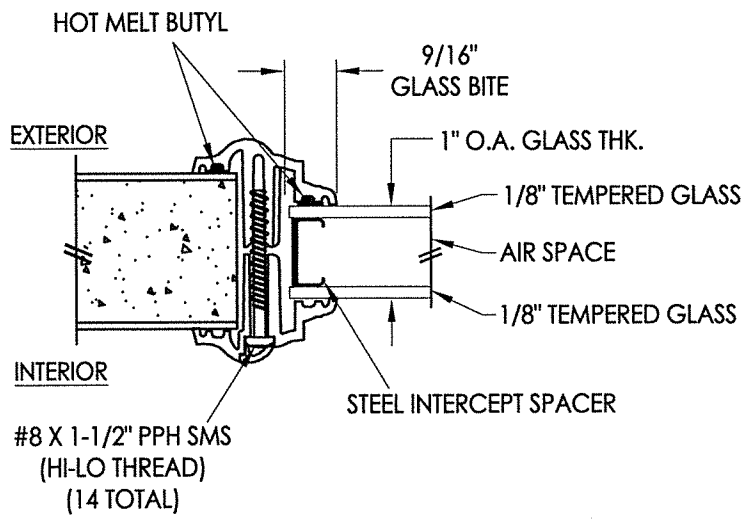
May 25, 2022
Documents Prepared By:
Lyndon F. Schmidt
P.E. No. 43409
R.W.
BUILDING CONSULTANTS, INC.
P.O. Box 230, Valrico, FL 33595
Phone No.: 813.659.9197
FBPE Registry No. 9813



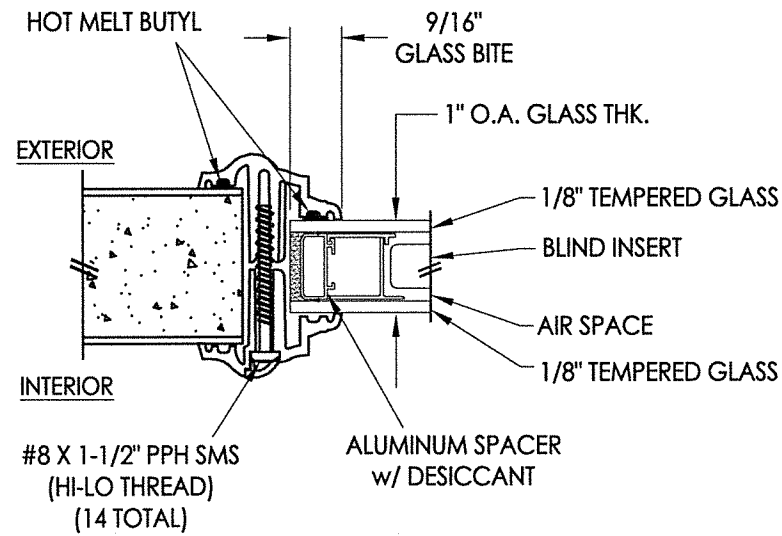
G2 1/2 LITE



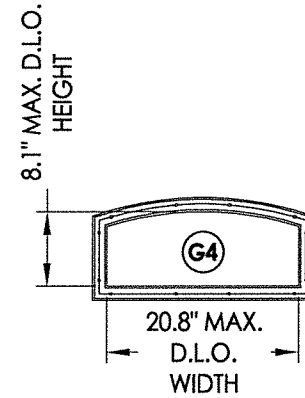
G3 1/2 LITE
w/ MICROBLINDS



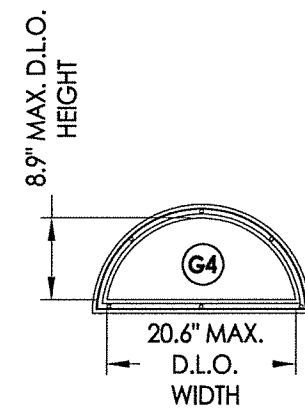
G2 GLAZING DETAIL
ODL LITE FRAME
EVOLVE (CLEAR)



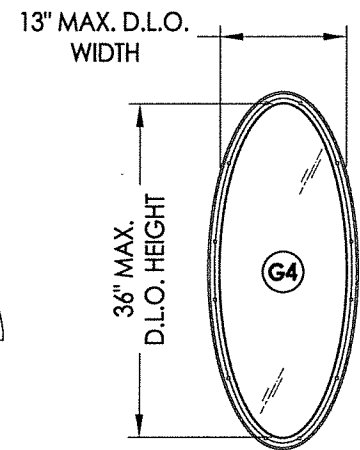
G3 GLAZING DETAIL
ODL LITE FRAME
EVOLVE (w/ BLINDS)



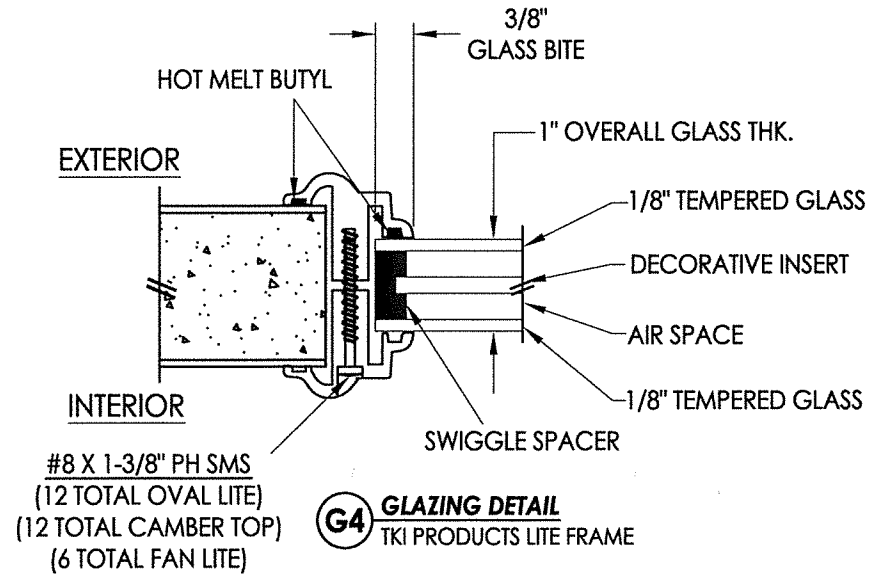
G4 CAMBER TOP



G4 FAN LITE



G4 3/4 OVAL

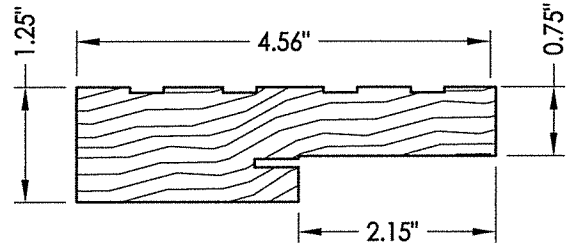


G4 GLAZING DETAIL
TKI PRODUCTS LITE FRAME

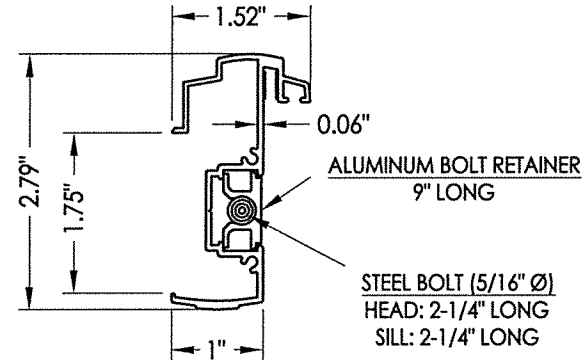
PRODUCT:		STEVE'S & SONS FIBERGLASS DOOR	
PART OR ASSEMBLY:		DOOR LITE FRAME & GLAZING DETAILS	
NO.	DATE	NO.	DATE
		REVISIONS	
DATE: 4/26/22			
SCALE: N.T.S.			
DWG. BY: RW			
CHK. BY: LFS			
DRAWING NO.: FL-41471.2			
SHEET 10 OF 11			

© 2022 R.W. BUILDING CONSULTANTS INC.

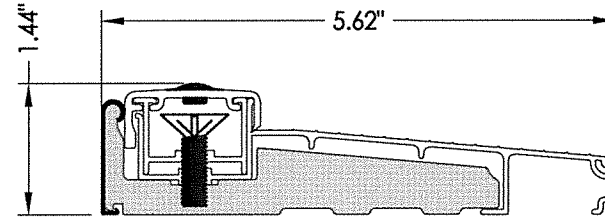
BILL OF MATERIALS		
ITEM #	DESCRIPTION	MATERIAL
A	1X BUCK (G >= 0.42)	WOOD
B	2X BUCK (G >= 0.42)	WOOD
C	1/4" MAX. SHIM SPACE	-
D	1/4" X 2-3/4" PFH DeWALT OR ITW CONCRETE SCREW	STEEL
E	MASONRY - 3,000 PSI MIN. CONCRETE CONFORMING TO ACI 301 OR HOLLOW BLOCK CONFORMING TO ASTM C90	CONCRETE
F	1/4" X 3-3/4" PFH DeWALT OR ITW CONCRETE SCREW	STEEL
G	3/16" X 3-1/4" PFH ITW CONCRETE SCREW	STEEL
H	3/16" X 3-3/4" PFH ITW CONCRETE SCREW	STEEL
J	#10 X 3" PFH WOOD SCREW	STEEL
L	#10 X 2-1/2" PFH WOOD SCREW (1.15" MIN. EMB.)	STEEL
M	3/16" X 2-1/4" PFH ITW CONCRETE SCREW	STEEL
P	1/4" X 2-1/4" PFH DeWALT OR ITW CONCRETE SCREW	STEEL
1	WOOD JAMB	WOOD
7	WEATHERSTRIP	FOAM
8	SWEEP	VINYL
9	4" X 4" HINGE	STEEL
11	#9 X 3/4" PFH WOOD SCREW	STEEL
12	LATCH STRIKE PLATE	STEEL
13	DEADBOLT STRIKE PLATE	STEEL
14	INSWING THRESHOLD	ALUM/COMP
15	OUTSWING THRESHOLD	ALUM/COMP
25	#8 X 2-1/2" PFH WOOD SCREW	STEEL
33	#10 X 2-1/2" PFH WOOD SCREW	STEEL
37	ASTRAGAL STRIKE PLATE	STEEL
38	ALUMINUM ASTRAGAL	ALUM
39	#8 X 2" FH SMS	STEEL
40	DOOR PANEL	-
41	#7 X 1-5/8" DRYWALL SCREW	STEEL
42	#8 X 2-1/2" FH SMS	STEEL



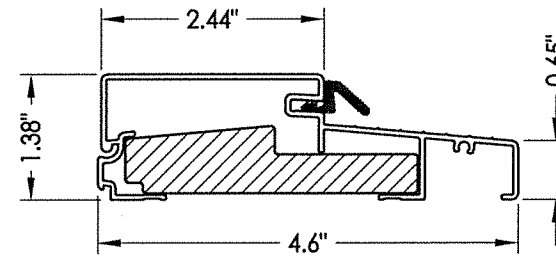
1 WOOD JAMB
FINGER JOINT PINE



38 ALUMINUM ASTRAGAL
Columbia 350



14 INSWING THRESHOLD
Columbia



15 OUTSWING THRESHOLD
Columbia

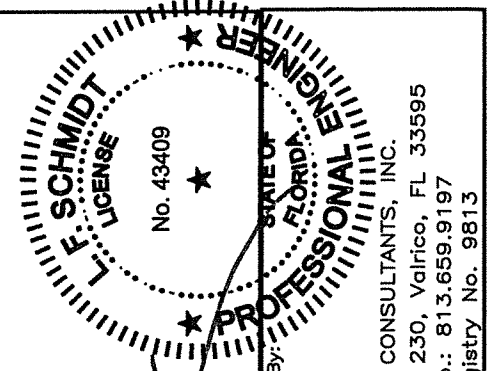
CONCRETE ANCHOR NOTES:

- Concrete anchor locations at the corners may be adjusted to maintain the min. edge distance to mortar joints.
- Concrete anchor locations noted as "MAX. ON CENTER" must be adjusted to maintain the min. edge distance to mortar joints, additional concrete anchors may be required to ensure the "MAX. ON CENTER" dimension are not exceeded.
- Concrete anchor table:

ANCHOR TYPE	ANCHOR SIZE	MIN. EMBEDMENT	MIN. CLEARANCE TO MASONRY EDGE	MIN. CLEARANCE TO ADJACENT ANCHOR
ITW BUILDEX TAPCON®	3/16"	1-1/4"	3"	1-1/2"
	1/4"	1-1/4"	2"	4"
DeWALT ULTRACON®	1/4"	1-1/4"	1"	4"

WOOD SCREW INSTALLATION NOTES:

- Maintain a minimum 5/8" edge distance, 1" end distance, & 1" o.c. spacing of wood screws to prevent the splitting of wood.



May 25, 2022
 Documents Prepared By:
 Lyndon F. Schmidt
 P.E. No. 43409
 R.W. BUILDING CONSULTANTS, INC.
 P.O. Box 230, Valrico, FL 33595
 Phone No.: 813.659.9197
 FBPE Registry No. 9813

PRODUCT:	STEVES & SONS FIBERGLASS DOOR
PART OR ASSEMBLY:	BILL OF MATERIALS & COMPONENTS
NO.	DATE
BY	
REVISIONS	

DATE: 4/26/22
 SCALE: N.T.S.
 DWG. BY: RW
 CHK. BY: LFS
 DRAWING NO.: FL-41471.2
 SHEET 11 OF 11