

STEVES AND SONS

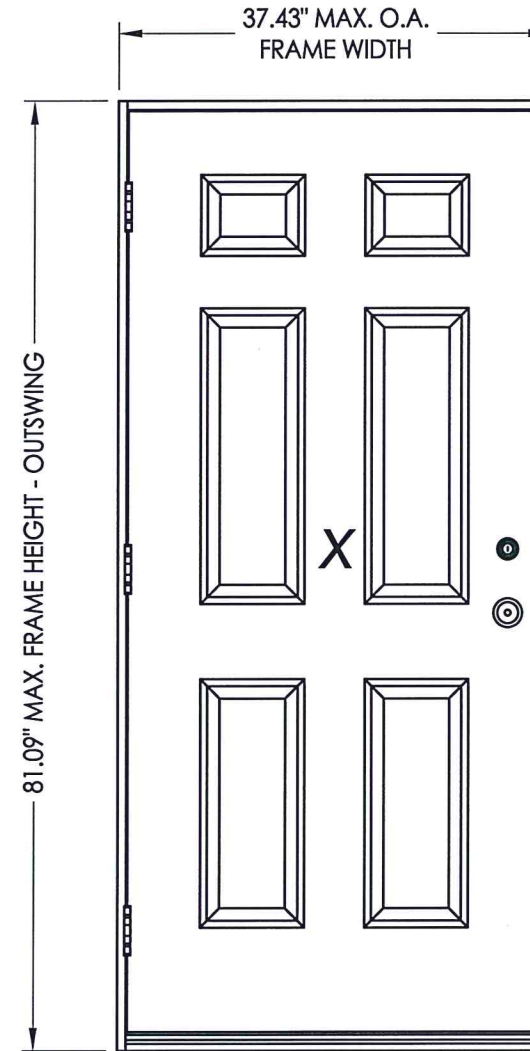
203 Humble Ave.
San Antonio, TX 78225

OPAQUE STEEL DOOR OUTSWING "IMPACT"

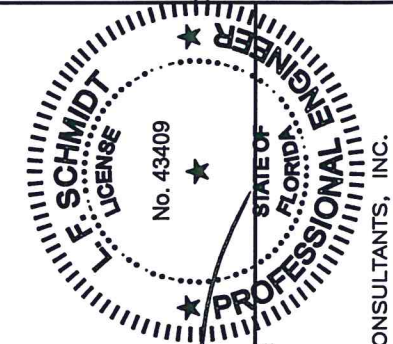
GENERAL NOTES

1. This product anchoring drawing has been evaluated and is in compliance with the 7th Edition (2020) Florida Building Code (FBC) excluding the "High Velocity Hurricane Zone" (HVHZ).
2. Product anchors shall be as listed and spaced as shown on details. Anchor embedment to base material shall be beyond wall dressing or stucco.
3. When used in areas requiring wind borne debris protection, this product complies with FBC Sections 1609.1.2 & R301.2.1.2. and does not require an impact resistant covering. This product meets missile level "D" and includes Wind Zone 4 as defined in ASTM E1996 and FBC Sections 1609.1.2.2 & R301.2.1.2.1.
4. For 2x stud framing construction, anchoring of these units shall be the same as that shown for 2x buck masonry construction.
5. Site conditions that deviate from the details of this drawing require further engineering analysis by a licensed engineer or registered architect.

TABLE OF CONTENTS	
SHEET #	DESCRIPTION
1	Typical elevations, design pressures & general notes
2	Door panel construction details
3	Horizontal cross sections
4	Vertical cross sections
5	Buck and frame anchoring - 2X buck masonry construction
6	Frame anchoring - 1X buck masonry construction
7	Bill of materials & components



SWING	MAX. FRAME DIMENSION	DESIGN PRESSURE (PSF)	
		POSITIVE	NEGATIVE
OUTSWING	37.43" x 81.09"	+47.0	-47.0



LFS

September 21, 2020
Documents Prepared By:
Lyndon F. Schmidt
P.E. No. 43409

BUILDING CONSULTANTS, INC.
P.O. Box 230, Valrico, FL 33595
Phone No.: 813.659.9197
FBPE Registry No. 9813

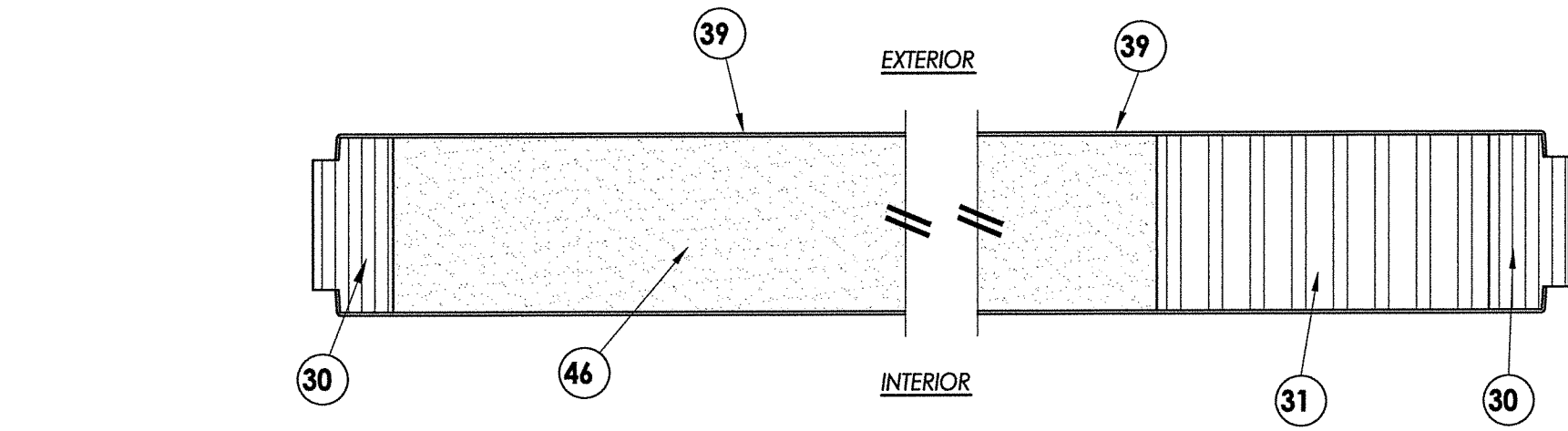
RW

PRODUCT: STEVES AND SONS
PART OR ASSEMBLY: TYPICAL ELEVATION, DESIGN PRESSURES & GENERAL NOTES

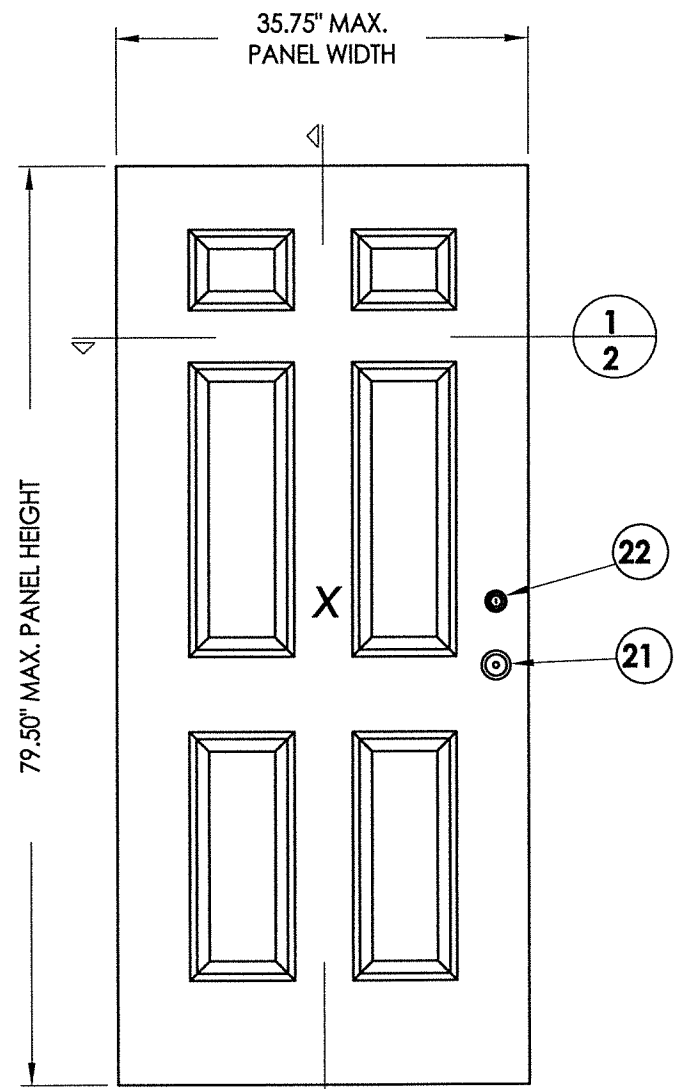
NO.	DATE	BY	REVISIONS
2	9/16/20	LFS	UPDATE TO 7TH ED. (2020) FBC
1	10/08/17	JK	UPDATE TO 6TH ED. (2017) FBC

DATE: 7/18/15
SCALE: N.T.S.
DWG. BY: JK
CHK. BY: LFS
DRAWING NO.: FL-17903.1
SHEET 1 OF 7

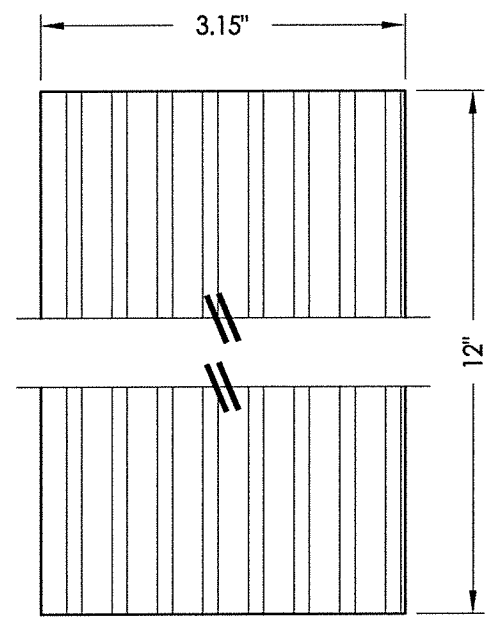
R:\Clients\Steves and Sons - Permanent\A - Florida Product Approvals\FL-17903 6'8 Opaque and Glazed Steel\C - Drawings\FL-17903 (2020)\FL-17903.1-2.dwg, 2.1



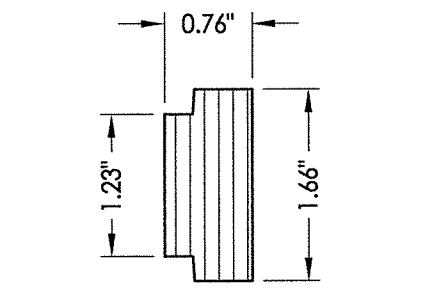
1 HORIZONTAL CROSS SECTION
2



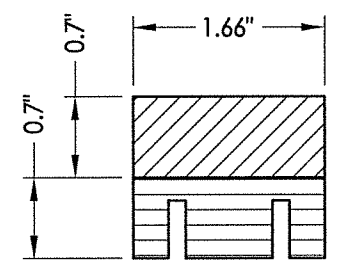
7 STEEL DOOR
OPAQUE



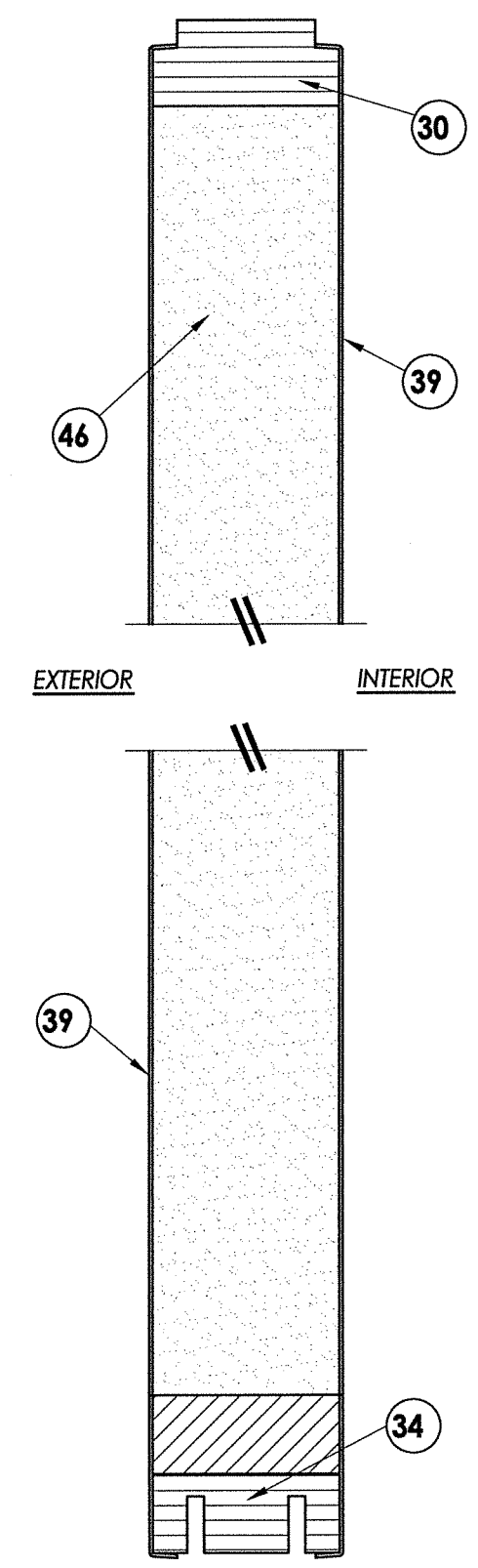
31 LOCK BLOCK



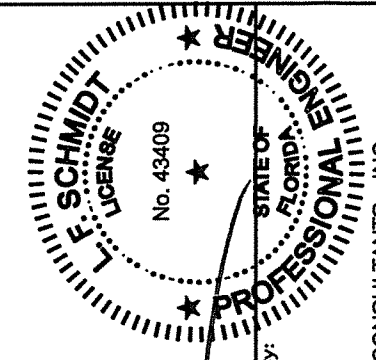
30 HINGE & LATCH STILE & TOP RAIL



34 BOTTOM RAIL



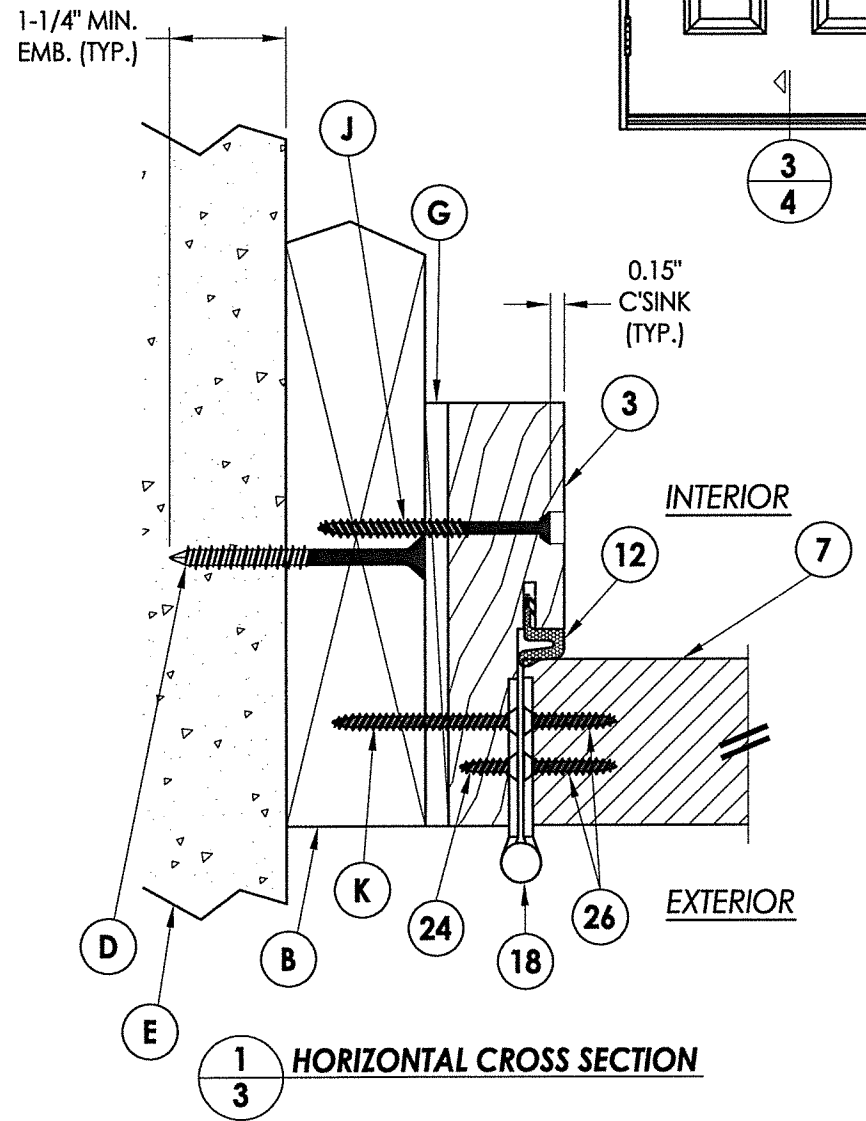
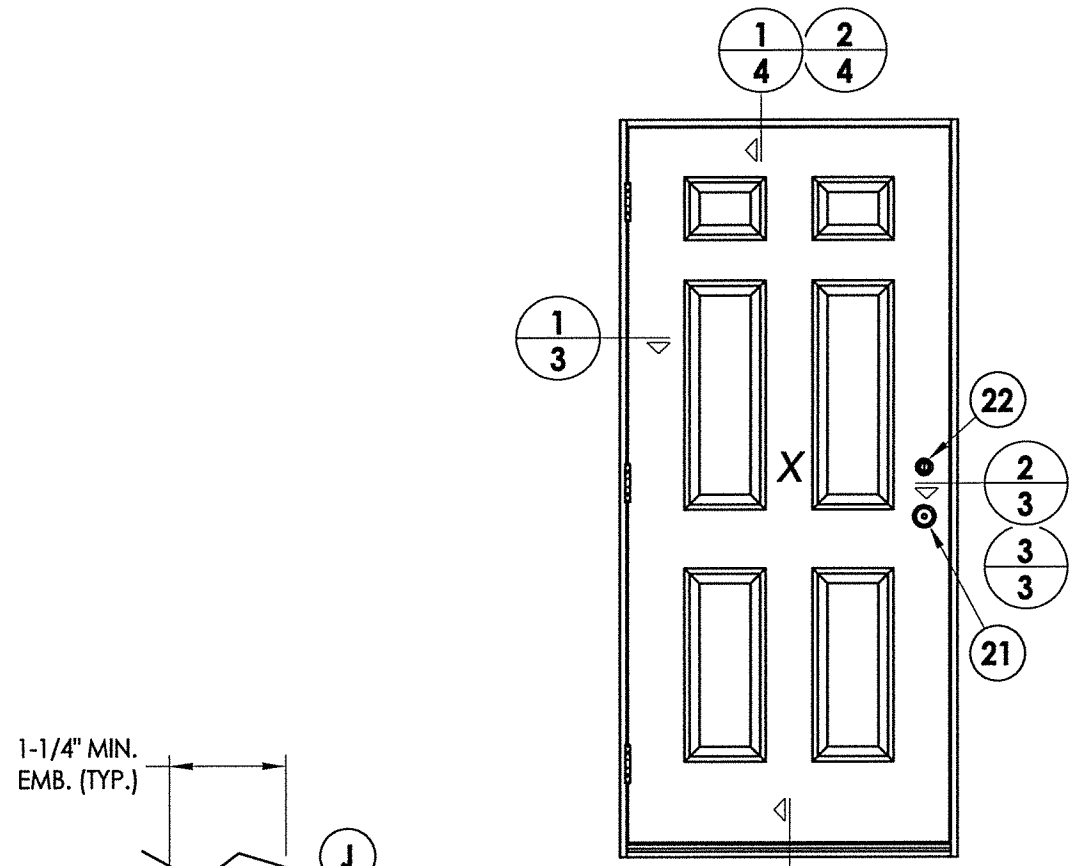
2 VERTICAL CROSS SECTION
2



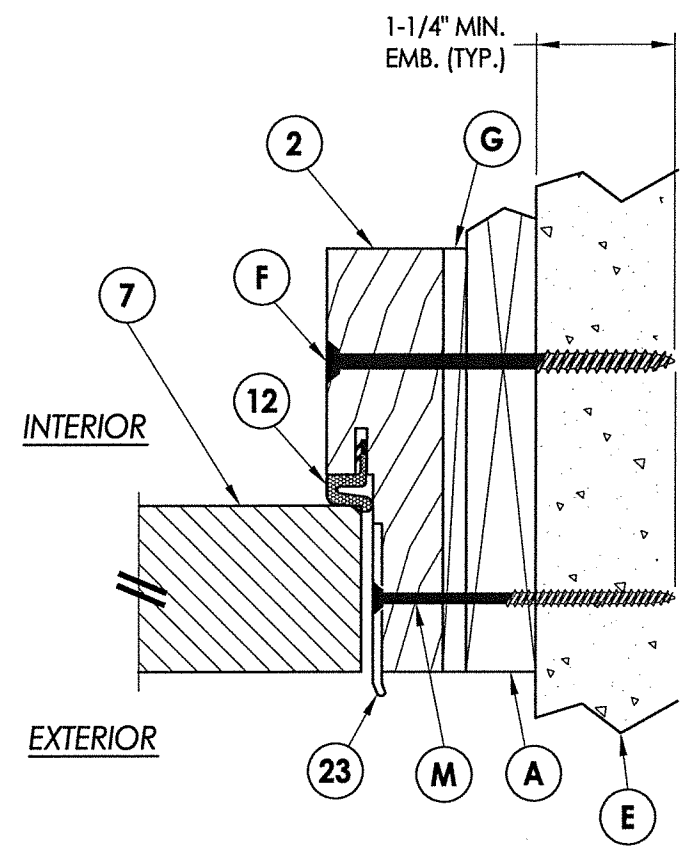
September 21, 2020
Documents Prepared By:
Lyndon F. Schmidt
P.E. No. 43409

R.W.
BUILDING CONSULTANTS, INC.
P.O. Box 230, Valrico, FL 33595
Phone No.: 813.659.9197
FBPE Registry No. 9813

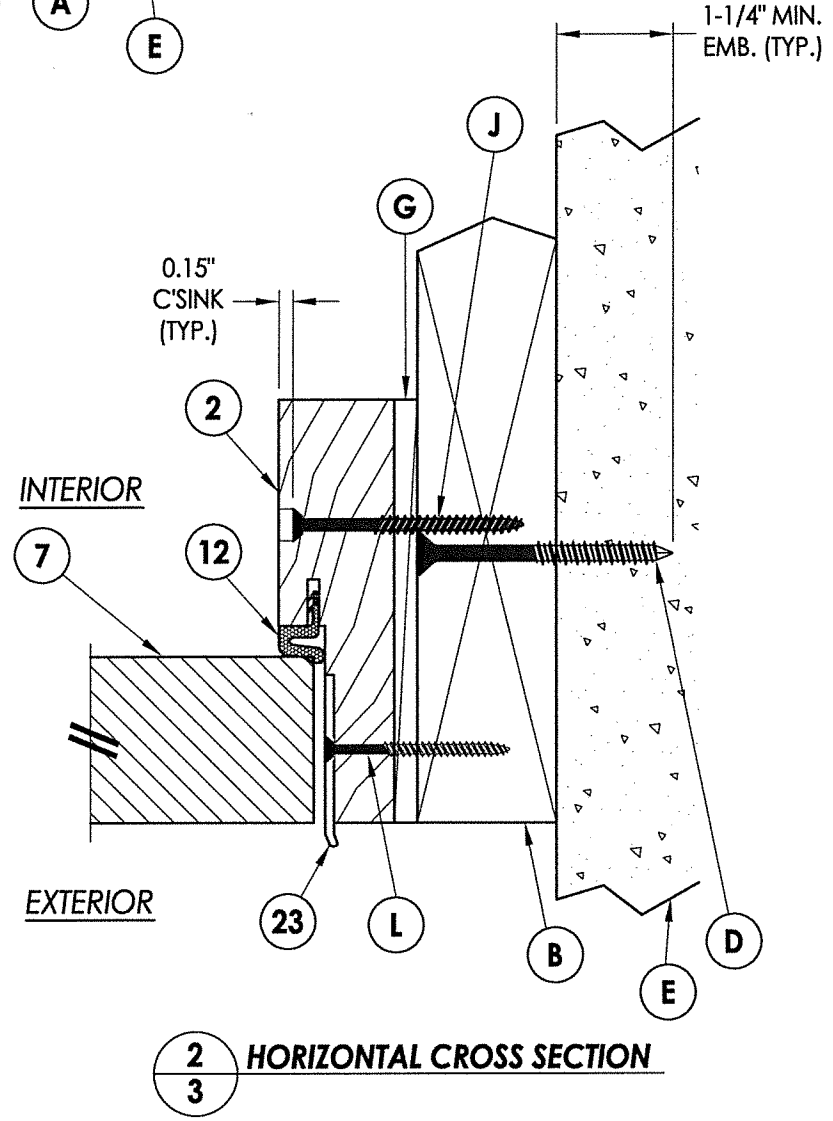
PRODUCT:		STEVES AND SONS	
PART OR ASSEMBLY:		DOOR PANEL CONSTRUCTION DETAILS	
NO.	DATE	BY	REVISIONS
2	9/16/20	LFS	UPDATE TO 7TH ED. (2020) FBC
1	10/08/17	JK	UPDATE TO 6TH ED. (2017) FBC
DATE: 7/18/15			
SCALE: N.T.S.			
DWG. BY: JK			
CHK. BY: LFS			
DRAWING NO.: FL-17903.1			
SHEET 2 OF 7			



1
3 HORIZONTAL CROSS SECTION



3
3 HORIZONTAL CROSS SECTION
Shown w/1X sub-buck



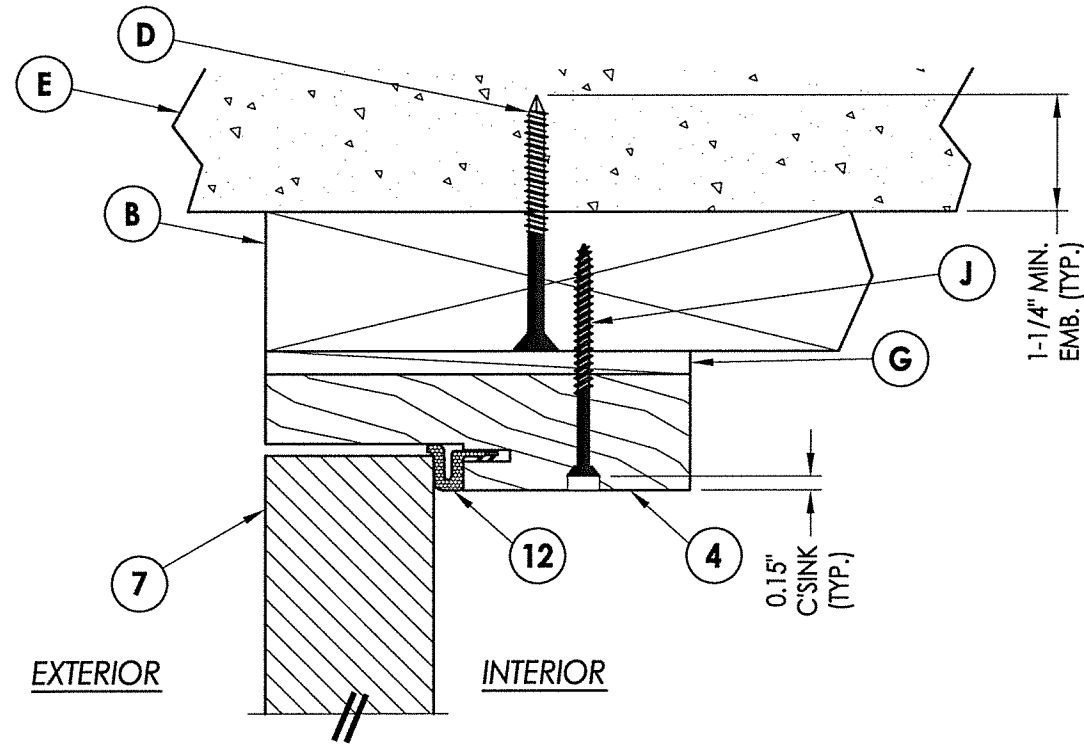
2
3 HORIZONTAL CROSS SECTION

L. F. SCHMIDT
P. E. LICENSE No. 43409
STATE OF FLORIDA
PROFESSIONAL ENGINEER

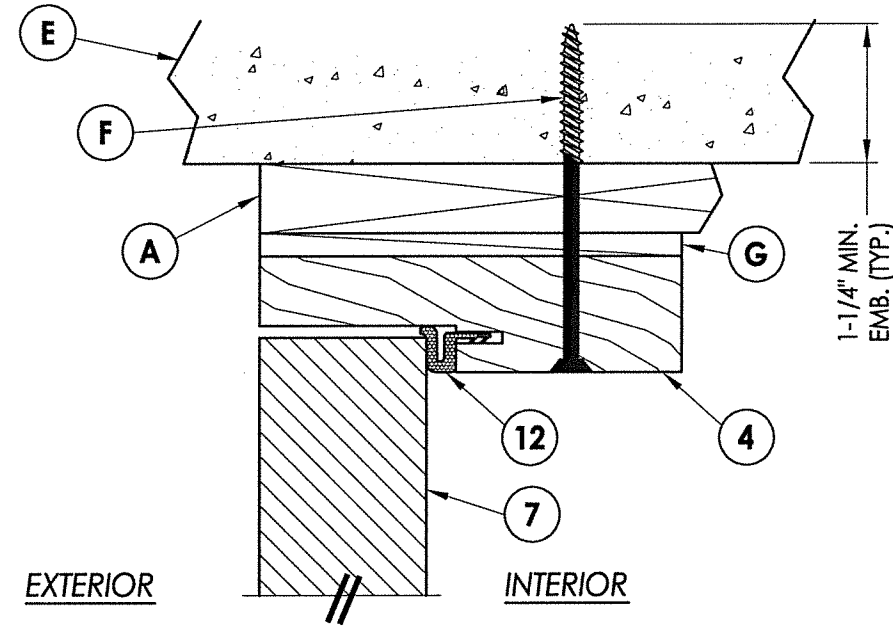
September 21, 2020
Documents Prepared By:
Lyndon F. Schmidt
P.E. No. 43409

R.W.
BUILDING CONSULTANTS, INC.
P.O. Box 230, Valrico, FL 33595
Phone No.: 813.659.9197
FBPE Registry No. 9813

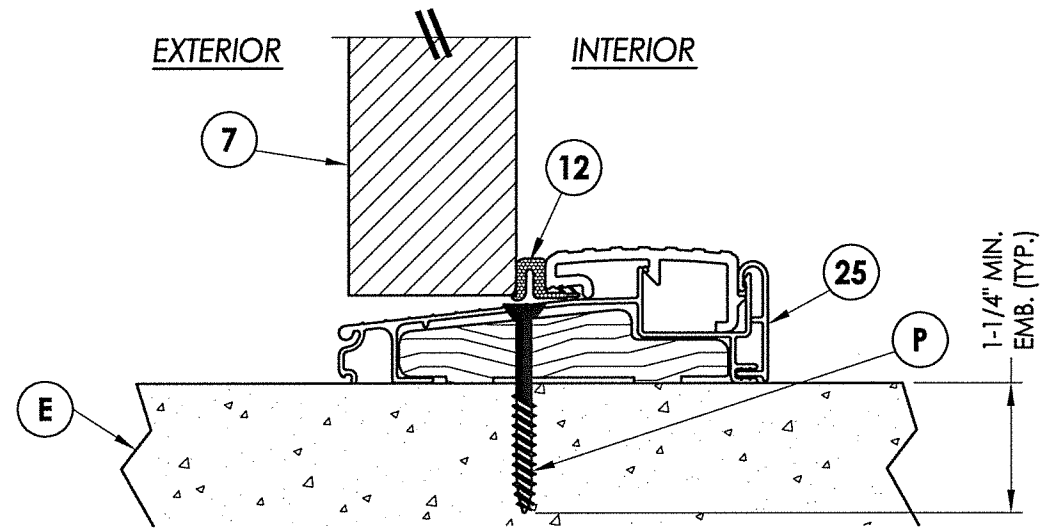
PRODUCT:		STEVES AND SONS	
PART OR ASSEMBLY:		HORIZONTAL CROSS SECTIONS	
NO.	DATE	REVISIONS	BY
2	9/16/20	UPDATE TO 7TH ED. (2020)	FBC LFS
1	10/08/17	UPDATE TO 6TH ED. (2017)	FBC JK
DATE: 7/18/15			
SCALE: N.T.S.			
DWG. BY: JK			
CHK. BY: LFS			
DRAWING NO.: FL-17903.1			
SHEET 3 OF 7			



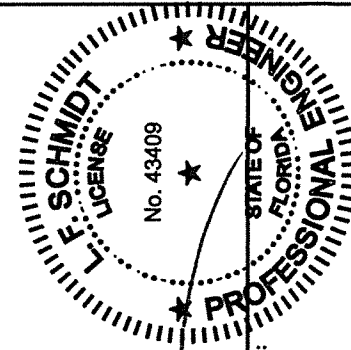
1
4 VERTICAL CROSS SECTION



2
4 VERTICAL CROSS SECTION
Shown w/1X sub-buck



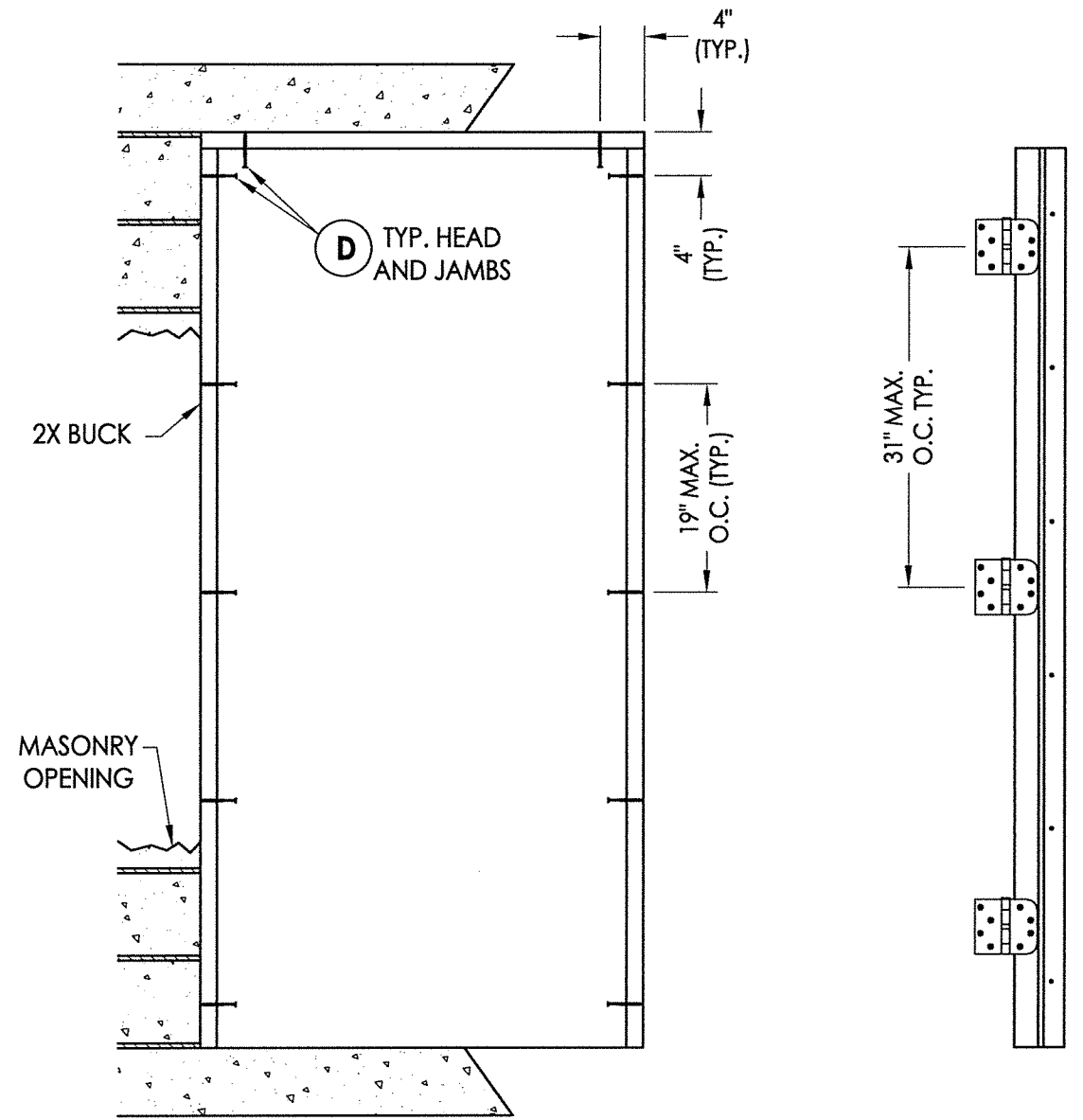
3
4 VERTICAL CROSS SECTION



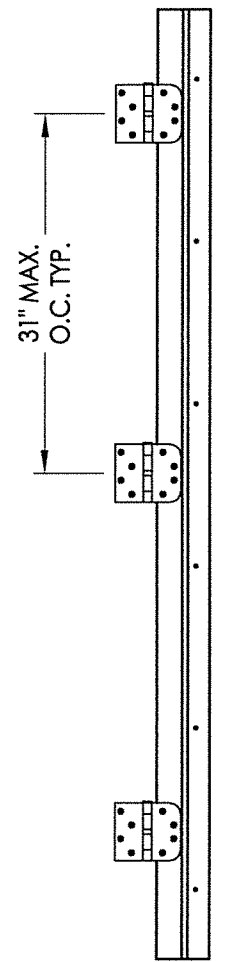
September 21, 2020
 Documents Prepared By:
 Lyndon F. Schmidt
 P.E. No. 43409

R.W. BUILDING CONSULTANTS, INC.
 P.O. Box 230, Valrico, FL 33595
 Phone No.: 813.659.9197
 FBPE Registry No. 9813

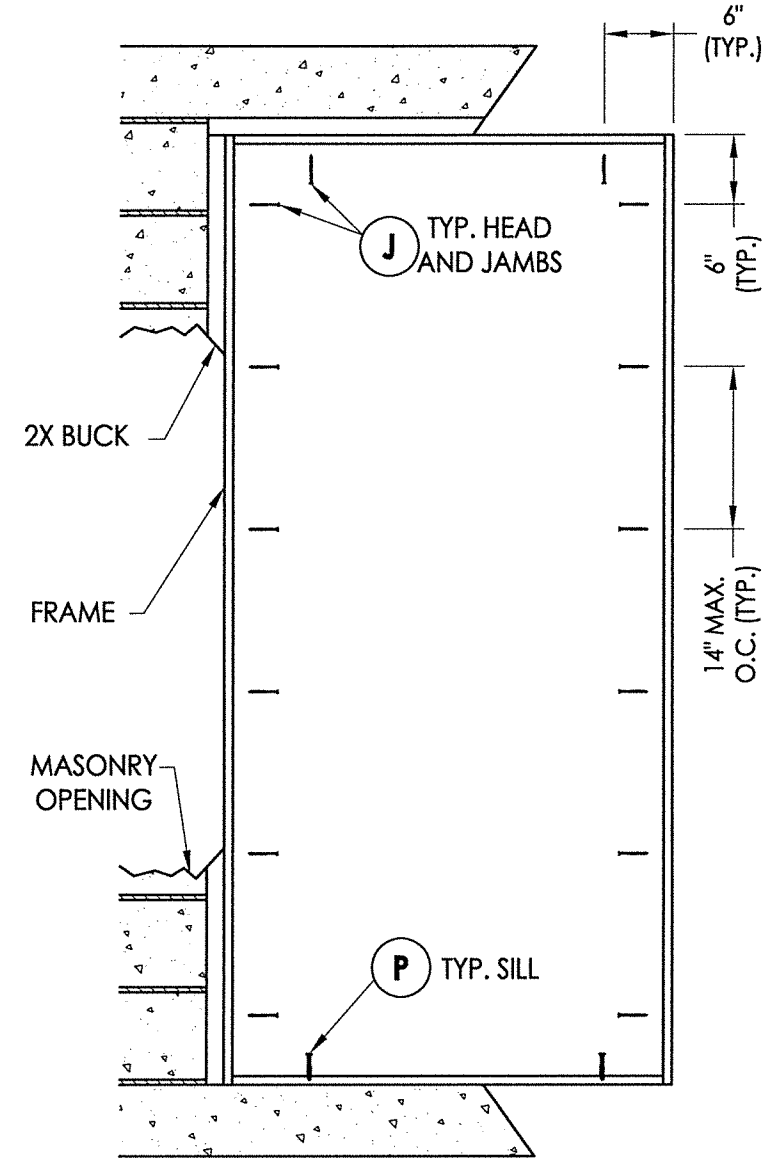
PRODUCT:		STEVES AND SONS	
PART OR ASSEMBLY:		VERTICAL CROSS SECTIONS	
		LFS	JK
2	9/16/20	UPDATE TO 7TH ED. (2020) FBC	FBC
1	10/08/17	UPDATE TO 6TH ED. (2017) FBC	FBC
NO.	DATE	REVISIONS	
DATE: 7/18/15			
SCALE: N.T.S.			
DWG. BY: JK			
CHK. BY: LFS			
DRAWING NO.: FL-17903.1			
SHEET 4 OF 7			



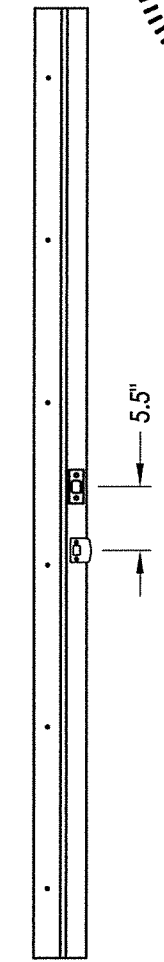
BUCK ANCHORING



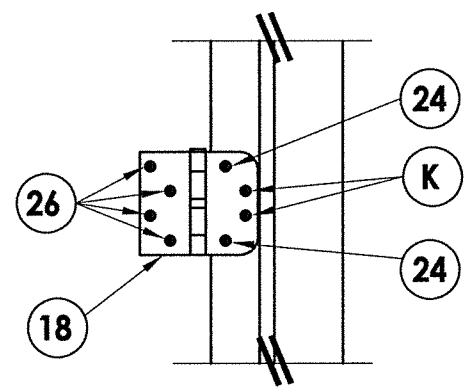
HINGE JAMB



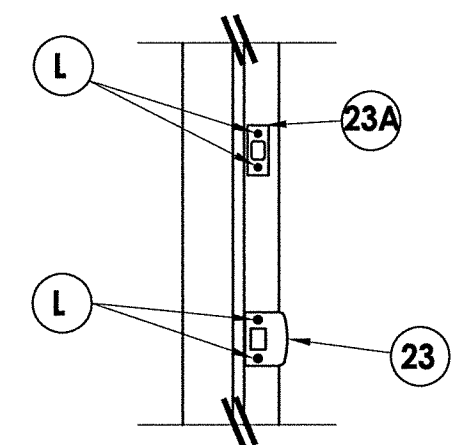
FRAME ANCHORING
Masonry 2X buck construction



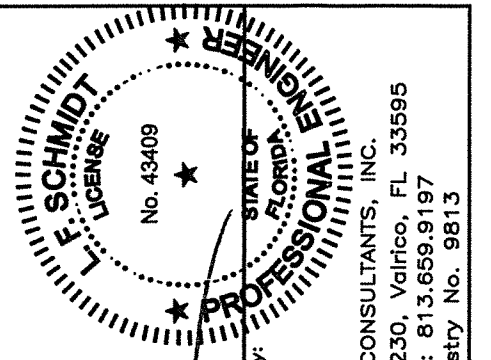
STRIKE JAMB



HINGE DETAIL

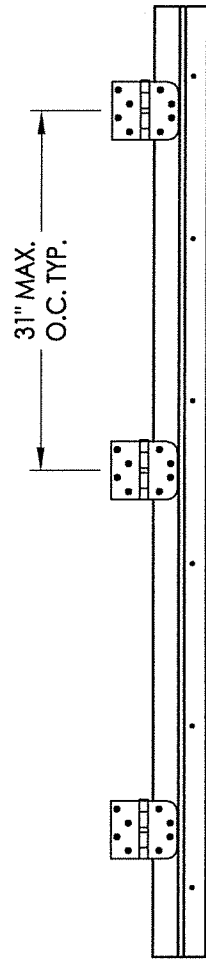


STRIKE PLATE DETAIL

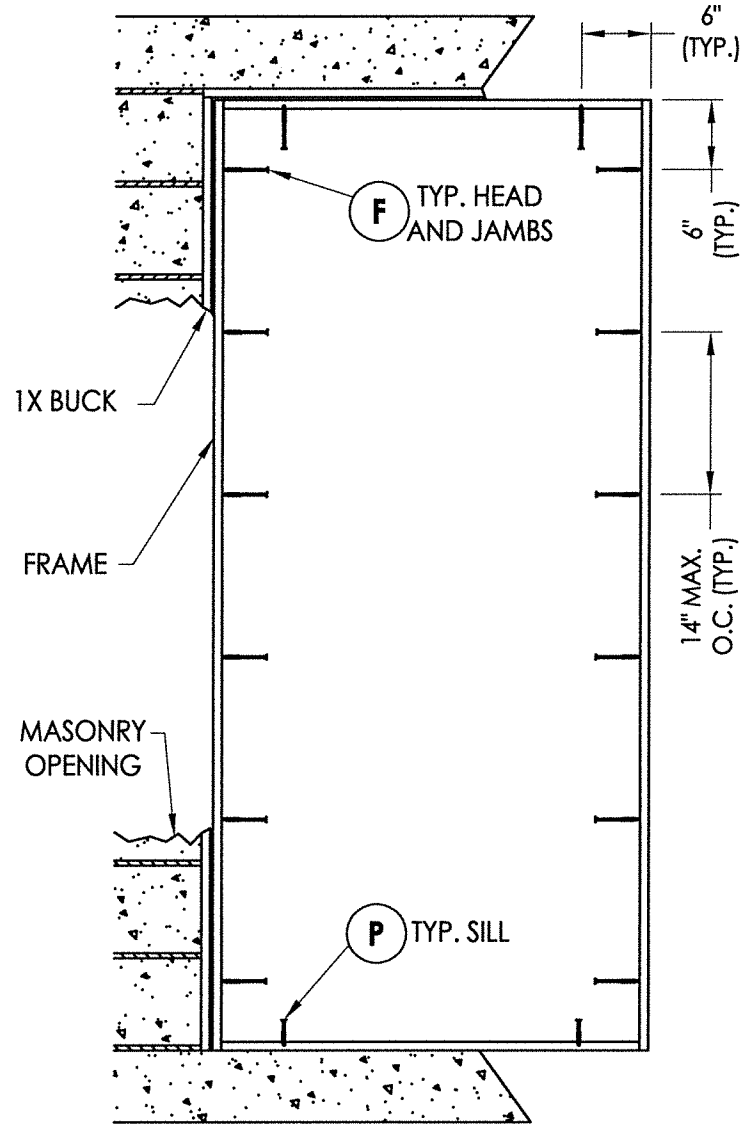


September 21, 2020
 Documents Prepared By:
 Lyndon F. Schmidt
 P.E. No. 43409
 R.W. BUILDING CONSULTANTS, INC.
 P.O. Box 230, Valrico, FL 33595
 Phone No.: 813.659.9197
 FBPE Registry No. 9813

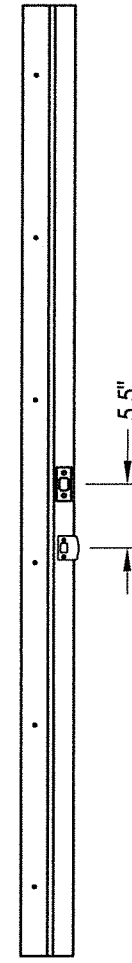
PRODUCT:		STEVES AND SONS	
PART OR ASSEMBLY:		BUCK AND FRAME ANCHORING 2X BUCK MASONRY CONSTRUCTION	
NO.	DATE	BY	REVISIONS
2	9/16/20	LFS	UPDATE TO 7TH ED. (2020) FBC
1	10/08/17	JK	UPDATE TO 6TH ED. (2017) FBC
DATE: 7/18/15			
SCALE: N.T.S.			
DWG. BY: JK			
CHK. BY: LFS			
DRAWING NO.: FL-17903.1			
SHEET 5 OF 7			



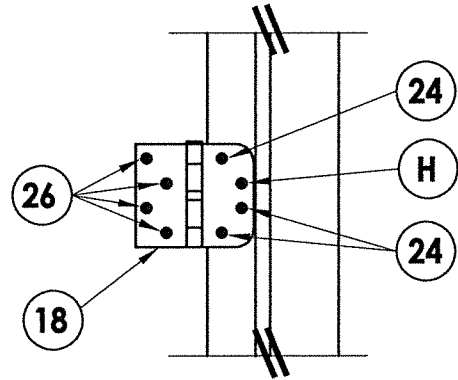
HINGE JAMB



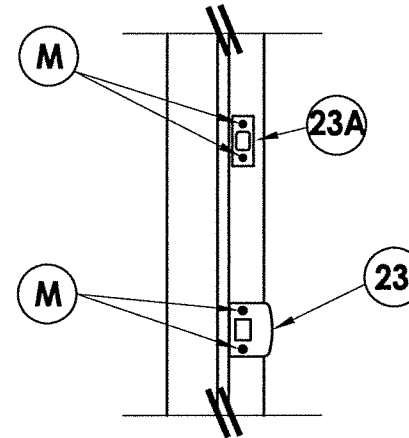
FRAME ANCHORING
Masonry 1X buck construction



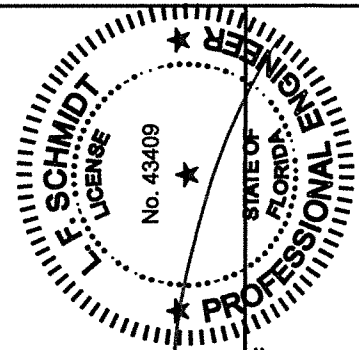
STRIKE JAMB



HINGE DETAIL



STRIKE PLATE DETAIL



Lyndon F. Schmidt

September 21, 2020

Documents Prepared By:
Lyndon F. Schmidt
P.E. No. 43409

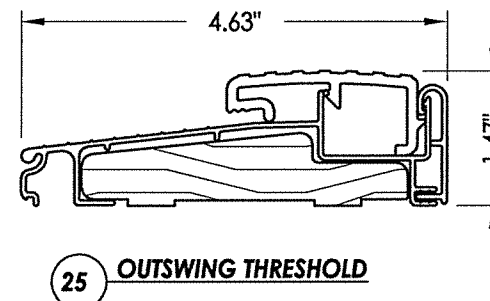
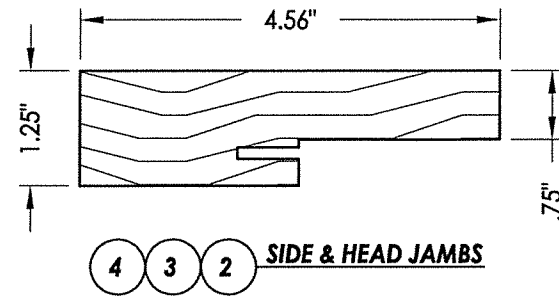
R.W. BUILDING CONSULTANTS, INC.
P.O. Box 230, Valrico, FL 33595
Phone No.: 813.659.9197
FBPE Registry No. 9813

PRODUCT:	STEVES AND SONS
PART OR ASSEMBLY:	FRAME ANCHORING
	1X BUCK MASONRY CONSTRUCTION

NO.	DATE	BY	REVISIONS
2	9/16/20	LFS	UPDATE TO 7TH ED. (2020) FBC
1	10/08/17	JK	UPDATE TO 6TH ED. (2017) FBC

DATE:	7/18/15
SCALE:	N.T.S.
DWG. BY:	JK
CHK. BY:	LFS
DRAWING NO.:	FL-17903.1
SHEET	6 OF 7

BILL OF MATERIALS		
ITEM	DESCRIPTION	MATERIAL
A	1X BUCK SG >= 0.55	WOOD
B	2X BUCK SG >= 0.55	WOOD
D	1/4" X 2-3/4" DeWALT OR ITW PFH CONCRETE SCREW	STEEL
E	MASONRY - 3,000 PSI MIN. CONCRETE CONFORMING TO ACI 301 OR HOLLOW BLOCK CONFORMING TO ASTM C90	CONCRETE
F	1/4" X 3-3/4" ITW PFH CONCRETE SCREW	STEEL
G	MAX. 1/4" SHIM SPACE	-
H	1/4" X 3-1/4" ITW PFH CONCRETE SCREW	STEEL
J	#10 X 2-1/2" PFH WS (1.15" MIN. EMBEDMENT)	STEEL
K	#9 X 2" PFH WS	STEEL
L	#8 X 2-1/2" PFH WS	STEEL
M	3/16" X 3-1/4" ITW PFH CONCRETE SCREW	STEEL
P	1/4" X 2-1/4" ITW PFH CONCRETE SCREW	STEEL
2	STRIKE JAMB - FINGER-JOINT PINE - SG >= 0.42	WOOD
3	HINGE JAMB - FINGER-JOINT PINE - SG >= 0.42	WOOD
4	HEAD - FINGER-JOINT PINE - SG >= 0.42	WOOD
7	DOOR PANEL - SEE DOOR PANEL DETAIL SHEET FOR CONSTRUCTION DETAILS	-
12	WEATHERSTRIP QEBD650 Q-LON	-
18	3.983" X 4.0" HINGE MIN 0.098" THICK	STEEL
21	PASSAGE LOCK - KWIKSET SERIES	-
22	DEADBOLT - KWIKSET SERIES (660)	-
23	STRIKE PLATE	STEEL
23A	DEADBOLT STRIKE	STEEL
24	#9 X 5/8" PFH WS	STEEL
25	OUTSWING THRESHOLD ALUMINUM W/ COMPOSITE SUBSTRATE	ALUM./ COMP.
26	#9 X 1" PFH WS	STEEL
30	LATCH & HINGE STILE & TOP RAIL - SG >= 0.42	POPLAR
31	LVL LOCK BLOCK	POPLAR
34	BOTTOM RAIL - POPLAR LVL	POPLAR
39	STEEL SKIN 0.030" MIN. THICKNESS	STEEL
46	DOOR PANEL FOAMED CORE	POLYURETHANE



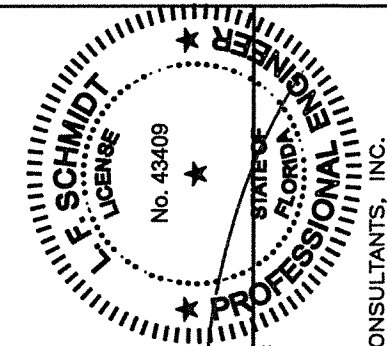
CONCRETE ANCHOR NOTES:

- Concrete anchor locations at the corners may be adjusted to maintain the min. edge distance to mortar joints.
- Concrete anchor locations noted as "MAX. ON CENTER" must be adjusted to maintain the min. edge distance to mortar joints, additional concrete anchors may be required to ensure the "MAX. ON CENTER" dimension are not exceeded.
- Concrete anchor table:

ANCHOR TYPE	ANCHOR SIZE	MIN. EMBEDMENT	MIN. CLEARANCE TO MASONRY EDGE	MIN. CLEARANCE TO ADJACENT ANCHOR
ITW TAPCON®	1/4"	1-1/4"	2"	4"
DeWALT ULTRACON®	1/4"	1-1/4"	1"	4"
ITW TAPCON®	3/16"	1-1/4"	3"	1-1/2"

WOOD SCREW INSTALLATION NOTES:

- Maintain a minimum 5/8" edge distance, 1" end distance, & 1" o.c. spacing of wood screws to prevent the splitting of wood.



September 21, 2020
 Documents Prepared By:
 Lyndon F. Schmidt
 P.E. No. 43409

R.W.
 BUILDING CONSULTANTS, INC.
 P.O. Box 230, Valrico, FL 33595
 Phone No.: 813.659.9197
 FBPE Registry No. 9813

PRODUCT:	STEVES AND SONS
PART OR ASSEMBLY:	BILL OF MATERIALS & COMPONENTS
DATE:	7/18/15
SCALE:	N.T.S.
DWG. BY:	JK
CHK. BY:	LFS
DRAWING NO.:	FL-17903.1
SHEET	7 OF 7